



WORKPLACE UP TO DATE

TSM[®]



TOOL-SERVER-MODULAR 2017/18

EXKLUSIV

... more work space

	TSM®-System Software and Hardware	Page 6
 	Spiral vending machine	Page 16
	Grid subdivision	Page 20
	TSM®-150	Page 24
	TSM®-300	Page 30
	TSM®-450	Page 42
	TSM®-600	Page 52
	Complete solutions Linkage variants	Page 64
	TSS® ToolServerSystem	Page 67

Made in Germany

We develop and produce by making use state-of-the-art machinery. In addition to punching/nibbling robots, laser cutting systems and a fully automated bending centre, production is also optimised by welding robots. A fully automated powder coating system brings colour to your workplace.

We are committed to protecting the environment. To ensure the thrifty use of resources such as raw materials, energy and water, we encourage and motivate all employees to use them with a sense of responsibility. We avoid harmful environmental risks, reduces waste and complies with all relevant environmental regulations. Moreover, all employees are involved in improving quality and environment-related

aspects within the company.

We offer our employees ongoing perspectives for the long term.

We also pay a lot of attention to ensuring a long service life and environmental compatibility of our products during the manufacturing process itself.

We are certified to: DIN ISO 9001 and DIN ISO 14001

"Quality from the Black Forest"



Advice

We develop individual solutions together with you.

Planning

If you have decided on a design, our planning consultants will be pleased to advise you and talk through everything with you on site. This naturally also includes 3D drawings.

Offer

All costs are transparently calculated.
We are also pleased to offer lease or hire-purchase arrangements.

Delivery

Because all of our products are manufactured directly in Germany, we are able to keep to short lead times - despite order-based manufacturing and complex assemblies.

Commissioning

We won't leave you to figure out your new TSM® on your own. Our service engineers will accompany you through the commissioning process.

Service

In order to fully meet your requirements and expectations, please contact us by phone or email.
We are at your disposal from Monday to Thursday from 8.00 am to 4.30 pm and on Friday from 8.00 am to 12.00 noon.

Your contact partners

Tool-Server-Modular (TSM®)

Complete control takes place via storage and administration software. The TSM® meets your requirements with a modular drawer concept. The modules can be combined with each other to suit your needs. The TSM® is compatible with the TSS®. Both systems complement each other with the unrivalled range of variants and combinations across the board. The software is identical and therefore allows retrofits and upgrades.

Intuitive user login

Tool-Server-Systems (TSS®)

The TSS® series is the new generation of drawer cabinets. Various types of closure are available: Mechanical and electromechanical locking, simple control via storage and administration software. Connection to third-party software or proprietary Bedrunka-Hirth software. Flexible, functional and efficient.



PIN



RFID

Connection options



Interface for connecting to the company network



Connection to your ERP system



External storage administration

TSM/TSS service hotline

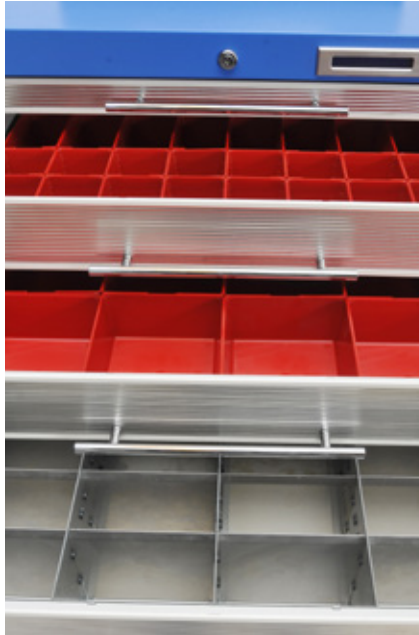
Service 
Tel.: +32 (0)9 232 06 78
email: info@awp.be

The TSM® Tool-Server-Modular



Your advantages:

- High user friendliness
- Guaranteed stock levels
- Customised subdivision, including with single covers
- Unlocked drawer and cover is displayed on the LCD display
- Dispensing to authorised persons only
- Reduction in personnel costs
- 24-hour connection possible to any ERP systems
- Can be used where access control is required
- Diverse variations
- Up to 100 modules can be combined with each other to suit your needs
- System is operated autonomously with its own processor unit
- Individual access restrictions
- Maximum utilisation through the chaotic storage principle
- Part removal possible
- No unmanaged drawer stock levels
- Professional and sorted storage of materials and tools



The TSM® TOOL-SERVER-MODULAR is the technical innovation in tool dispensing.

Automation in the area of tool management is constantly advancing. The Tool-Server-Modular lets you enjoy much leaner and more efficient tool management. The costs of providing, managing and using tools and small materials are significantly reduced by using our tool storage system. Increased competition in the manufacturing industry is leading to greater cost pressure and forcing companies to consider optimising their production processes. Only companies with professional resource logistics can ensure a smooth and therefore economic production process.

Our fully automated tool dispensing system supports you on your way to professional tool management.

We meet your requirements with a modular drawer concept. Up to 100 modules can be connected to each other in every conceivable combination, accessible online around the

clock by means of a chip card or PIN. Extensive lists and analyses which enable the tracing of tool consumption and user withdrawals are also available. The reporting software enables user-friendly evaluation of the collected data. A modern touchscreen and simple software dialogue boxes create a convenient way of working. The industrial PC is dust-protected to IP60, works without fans and is ideally suited for applications in tough manufacturing environments.

When developing the TSM®, a lot of attention was paid to creating a modern yet classic design. Thanks to the use of high-quality materials, the consistent application of aluminium decorative elements with a polished finish, the TSM® is a real eye-catcher. Well-developed service allows rapid deployment of the system with customers.

TSM®: the most advanced tool dispensing system, a product



...the innovative, modular storage system for small parts

Cost saving:

Studies conducted at manufacturing companies reveal the following:

- In 16% of all cases, work processes are interrupted due to a lack of tools
- 20% of the machine operator's time is spent looking for tools
- 30-60% of tool stores are not properly managed

In contrast, taking effects of tool management projects into consideration shows clear success:

- 30% reduction in tool variety
- 20% reduction in provisioning effort
- 20% reduction in stock and work-in-progress levels
- 15% saving on tool consumption
- By using our tool management system, you enjoy savings through improved control, organisation and overview, automated ordering and staff optimisation, the prevention of loss and theft, falling stock level costs, employee sensitisation and third-party filling.

Software:

- User interface: Toolserver software
- Operating system: Windows 8.1 Embedded 64 bit

Discount



Discount rate 1



Discount rate 2



Technical data



	TSM® 150	TSM® 300	TSM® 450	TSM® 600
External dimensions of housing W x D x H in mm	230 x 736 x 1,880	380 x 736 x 1,880	550 x 725 x 1,019	700 x 725 x 1,019
Empty weight of housing in kg	56	60	40	44
Max. load in kg	680	680	1,000	1,000
Internal drawer dimensions in mm				
Front height 50 mm	150 x 600 x 35	300 x 600 x 35	450 x 600 x 35	600 x 600 x 35
Front height 100 mm	150 x 600 x 85	300 x 600 x 85	450 x 600 x 85	600 x 600 x 85
Front height 150 mm	150 x 600 x 135	300 x 600 x 135	450 x 600 x 135	600 x 600 x 135
Front height 200 mm	-	-	450 x 600 x 185	600 x 600 x 185

For compartment inserts, see page 38

Software

Having created several technical concepts and involved a number of customers, we worked with specialists to produce new, modern, Windows-based software.

The TSM® software consists of three modules coordinated to each other right down to the smallest detail. These are based on one of the most modern Windows platforms available on the market today.

The three software modules are arranged as follows:

1. TSM® – Operating system and database
2. TSM® – Terminal software
3. TSM® – Manager

1. The TSM® – Operating system and database

- Windows 8.1 Embedded 64 bit
- Microsoft SQL-Server 2012 Express Edition
- Java 8
- Manual Windows update server
- TSM® - Update server
- Wizard for simple system configuration
- Specific applications on request



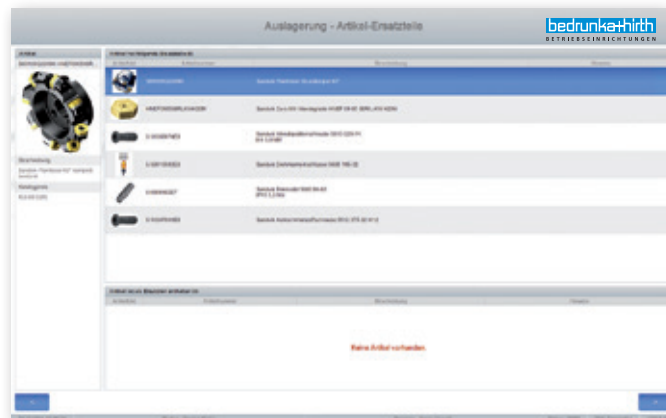
Software

2. The TSM® – Terminal software

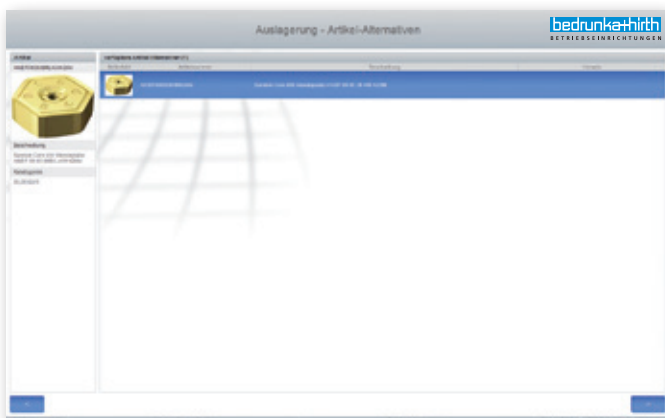
The completely new TSM® – Terminal software is noted for its simple, intuitive and clearly structured dialogue boxes, which come with a host of new functions.



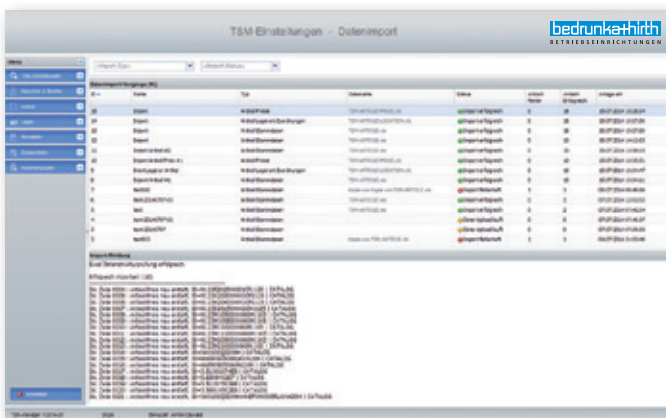
User rights can be made much more flexible thanks to the wide range of individual authorisations.



Integrated spare parts management makes it possible to break down the stored complete tools into the necessary spare parts. That simplifies the search for worn tools that have to be replaced. These are displayed via the complete tool.



It is now also possible to save an alternative for each item, in order to be able to take an equivalent replacement when the selected item is unavailable. This also enables a reduction in machine downtimes.

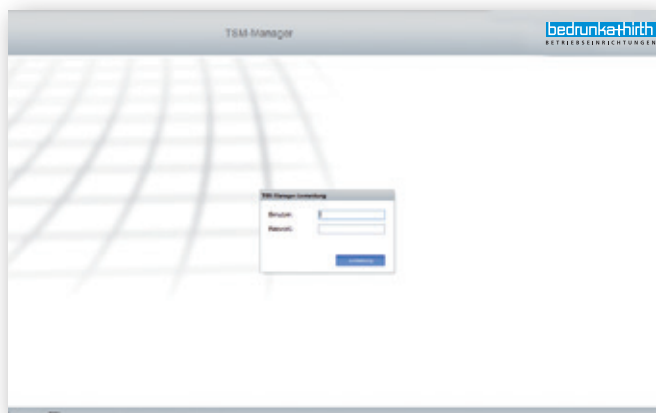


The items can initially be set up by importing Excel templates.

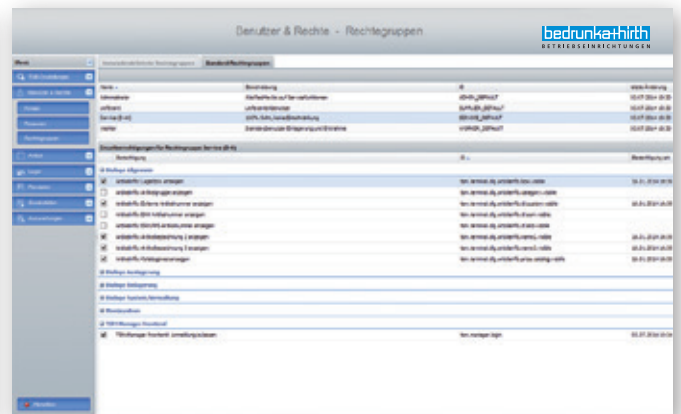
Software

3. The TSM® – Manager

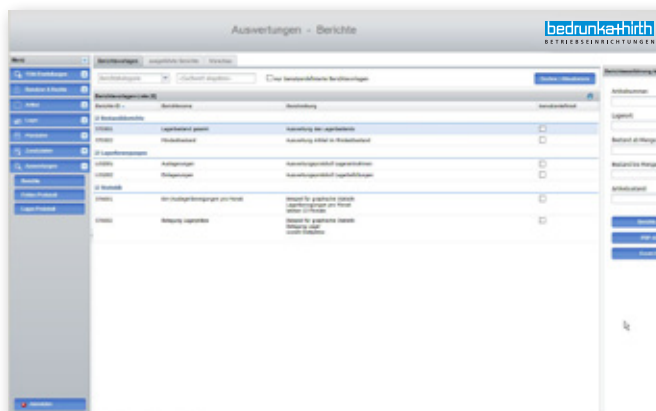
The TSM® – Manager is a complete administration, reporting and configuration program for your TSM® tool dispensing system. Designed as a web application, it enables secure access to the TSM® system from each workstation computer in your business. Access is by means of valid login data only.



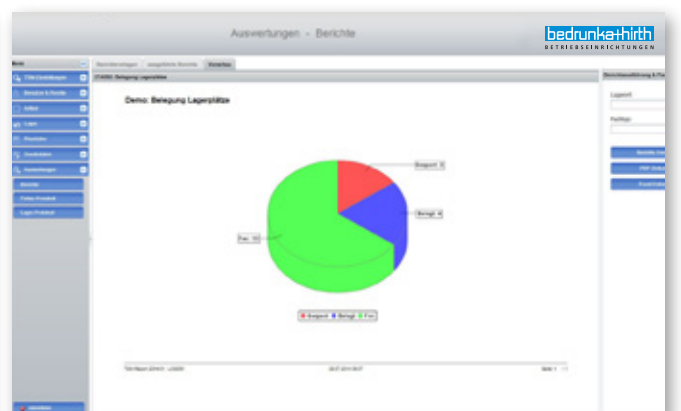
Each user needs authorisation and personal login details to access the TSM® – Manager.



The dialogue boxes are structured just as simply, intuitively and clearly as they are on the TSM® – Terminal.



The TSM® – Analysis tool has been integrated into the TSM® – Manager. A history of generated reports is kept to enable quick access to them as required.

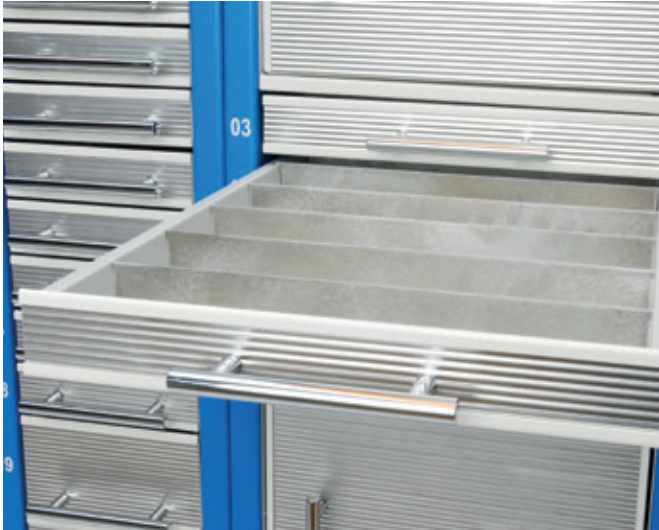


All results can be exported to various formats. Automated report generation is also possible.

The results can be output both as a table and/or as a graphic.

Highlights

Function:



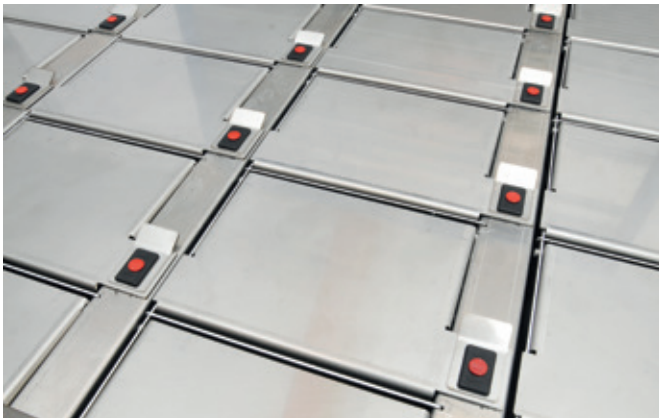
Each drawer is electromechanically locked and is unlocked by the software after entering the item to be taken out. A drawer can be used as a large single compartment for long tools, e.g. measuring tools, assembly tools, drilling tools, etc.

Arrangement:



The drawer can be divided into a matrix by using storage boxes. This allows a large range of tools to be managed very economically.

Security:



Should security play a central role in dispensing, all drawers can also be divided into "high-security cells" for all kinds of tools. This is done by using metal covers, which are electromechanically locked using the same principle as for the drawers. Various cover sizes are available.

User guidance:



The unlocked drawer and cover is displayed to the user on the touchscreen and additionally on the easy-to-read, multi-character LCD display. "Emergency unlocking" of the module is performed with a key.

Hardware



Touchscreen:	
(TSM® 150 + TSM® 300):	
Diagonal:	43.2 cm / 17"
Max. resolution:	1,280 x 1,024 px
Contrast:	1,000 : 1
Brightness:	300 cd/m²
(TSM® 450 + TSM® 600):	
Diagonal:	42.2 cm / 17"
Max. resolution:	1,280 x 1,024 px
Contrast:	1,000 : 1
Brightness:	300 cd/m²

Dimensions:	
Power supply:	19 VDC, 90 W power supply
USB 2.0 front panel:	2
Power LED:	1
Power switch:	1
2.5" disc drive:	1
External power supply:	Yes
Wall bracket:	Yes
VESA wall bracket:	Yes (100 x100)
Width:	394 mm
Height:	332 mm
Depth:	79 mm

Computer:	
CPU:	2.40 GHz
RAM:	from 4GB
Graphic board:	max. 384 shared MB, DirectX 10, 1,080p
HDD:	120 GB SSD 2.5"
USB 2.0 ports:	4
COM ports:	3
Gigabit LAN ports:	2

Mainboard:	
Chipset:	Intel® HM45
Graphic:	integrated in CPU
Audio:	Realtek® ALC 886
Storage:	1x SATA II
COM:	3
Max COM:	3
LAN type:	Dual Broadcom BCM 57780
GigabitLAN:	2
Max GigabitLAN:	2
USB 2.0:	3
Audio:	1
VGA:	1
HDMI:	0
Dual Display:	No
Full HD:	Yes



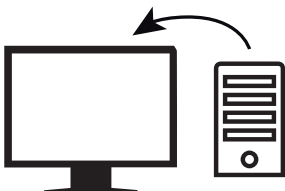
Optional software extension



TSM-Software licence

- TSM-Licence incl.
- TSM-Terminal software
- TSM-Manager software
- TSM-Reporting software
- TSM-Automation for standard reports
- Hardware dongle for additional data and software security, such as flexible software management
- Protection against manipulation
- Encryption of all data

Item no.
EK-6163



TSM-Control server for the controlling of third-party software

- Incl. interface for external control
- A TSM-Licence (EK6163) is additionally required.

Item no.
EK-6195



Central server incl. housing

- A TSM-Licence (EK6163) is additionally required.

Item no.
EK-6164



TSM LTE/UMTS router

- incl. dual SIM router with top-hat rail holder (excl. SIM card)
- External antennas

Item no.
EK-6303



Single price for installation, commissioning and training on site

- Within Germany incl. transport and travel costs

Item no.
Z14

Software

Software versions Functions	Bedrunka+Hirth TSM-Software		
	Standard	Optional	Options by interface
PIN login	X		
Individual RFID reader		X	
Multilingual	X		
Multi-supplier capable	X		
Standardised evaluations	X		
Connection to ERP system	X (by report export)		X
Administration of new tools	X		
Administration of used tools	X		
Administration of reground tools	X		
User administration	X		
User rights administration	X		
Supplier management	X		
Individual layout	X		
Cost centre administration	X		
Product group hierarchy	X		
Installation of new modules with Plug&Work	X		
Administration of external storage places	X		
User-related favourites list	X		
Regrinding service	X		
Return of blunt tools	X		
Job number administration	X		
Parts list and accessories administration	X		
Alternative item administration	X		
Planned withdrawals via picking lists	X		
Measuring equipment management	X		
Networking of systems	X		
Loan tool management	X		
External administration	X		
Graphic storage location view	X		
Graphic storage location configuration	X		
Individual colouring, 2-colour paintwork	X		
Automatic re-ordering	X		
Dialogue box for item assistance and information	X		
Cutting data print function	X		
Individual evaluations		X	
Controlling of spiral vending machines		X	
Controlling of Kardex lift systems		X	
Controlling of Kardex paternoster systems		X	
Graphic evaluation		X	



Technical data: TSM® Spiral Vending Machine

- Size: 990 x 880 x 1,830 mm (W x D x H)
- Weight: approx. 400 kg (without products, depending on the design)
- Electrical supply values: 230 V / 50 Hz / 10 A
- Power consumption: 670 W
- Space available for 1,200 packaging units
Packaging unit dimensions 54 x 19 x 180 mm (W x D x H)
- Light barrier for monitoring product dispensing
- Height-adjustable stainless steel compartments
- Individual adjustment to the products is possible
- Heavy-duty guidance of items weighing up to 40 kg is possible
- Max. 7 compartment levels can be inserted

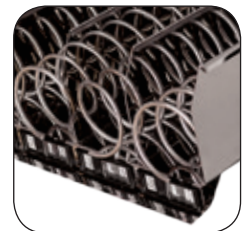


SoftDrop

- Intelligent lift system
- Dispensing tray that protects the products
- Protective transport to the dispensing tray, no falling tools



- Locking of the dispensing flap to protect against access.

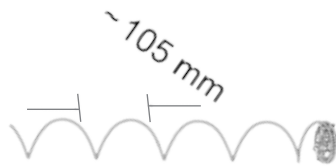


- 6 compartment levels (3 x up to 20 kg load, 3 x up to 40 kg load) with 10 spirals per level
- 60 stainless steel spirals, each with 20 windings for a maximum number of items with a product depth of up to 19 mm

Spirals

General facts

- First-in-First-out principle
- Spirals made from highly polished stainless steel
- **Winding:** Maximum number of products per spiral
- Up to 7 levels possible, however max. 3 levels of them with heavy-duty guidance mechanisms for 40 kg each
- 10 spirals can be inserted per level
- Modular structure

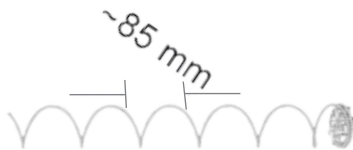


105 mm spiral

- For a maximum of 3 items up to a product depth of 105 mm
- 4 windings

Item no.

09.SPA04W105

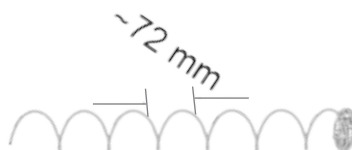


85 mm spiral

- For a maximum of 5 items up to a product depth of 85 mm
- 6 windings

Item no.

09.SPA06W085

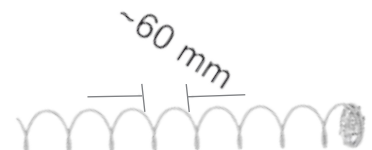


72 mm spiral

- For a maximum of 6 items up to a product depth of 72 mm
- 7 windings

Item no.

09.SPA07W072

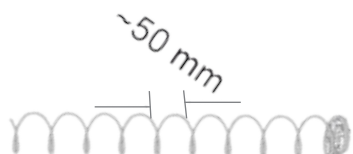


60 mm spiral

- For a maximum of 7 items up to a product depth of 60 mm
- 8 windings

Item no.

09.SPA08W060

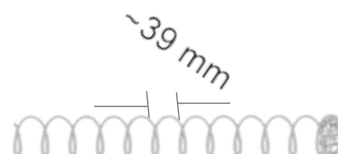


50 mm spiral

- For a maximum of 8 items up to a product depth of 50 mm
- 9 windings

Item no.

09.SPA09W050

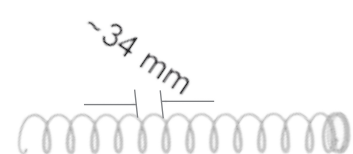


39 mm spiral

- For a maximum of 10 items up to a product depth of 39 mm
- 11 windings

Item no.

09.SPA11W039

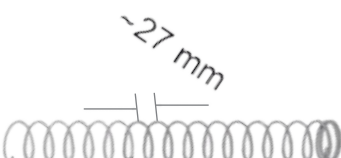


34 mm spiral

- For a maximum of 12 items up to a product depth of 34 mm
- 13 windings

Item no.

09.SPA13W034

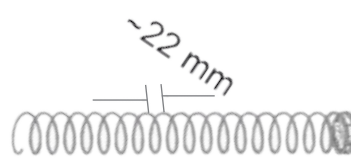


27 mm spiral

- For a maximum of 14 items up to a product depth of 27 mm
- 15 windings

Item no.

09.SPA15W027

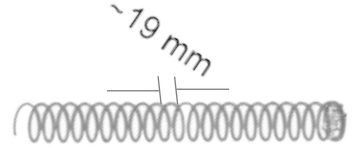


22 mm spiral

- For a maximum of 17 items up to a product depth of 22 mm
- 18 windings

Item no.

09.SPA18W022



19 mm spiral

- For a maximum of 20 items up to a product depth of 19 mm
- 21 windings

Item no.

09.SPA21W019



TSM® Spiral Vending Machine



Standard colours of housing

RAL 9010 Pure white	RAL 9006 White aluminium	RAL 9005 Jet black
------------------------	--------------------------------	-----------------------

The Front Housing (as seen in blue) is available in all Standard colours

TSM®-Software licence
Incl. TSM®-Terminal software, TSM®-Manager software, TSM®-Reporting software, TSM®-Automation for standard reports, hardware dongle for additional data and software security, such as flexible software management, protection against manipulation, encryption of all data

Item no.
EK-6163



- Vending machine housing as basic module**
- Incl. panel PC with 17" touch monitor
 - Lift system
 - Plinth trim in housing colour and door rebate cover
 - A TSM-Licence (EK6163) is additionally required.

Item no.	Dimensions in mm (W x D x H)
09.SPA1000GS	990 x 880 x 1,830



- Vending machine housing as extension module**
- Lift system
 - Plinth trim in housing colour and door rebate cover

Item no.	Dimensions in mm (W x D x H)
09.SPA1000AS	990 x 880 x 1,830

Compartment

- Compartment for 10 stainless steel spirals***
- Incl. 10 motors and compartment subdivision

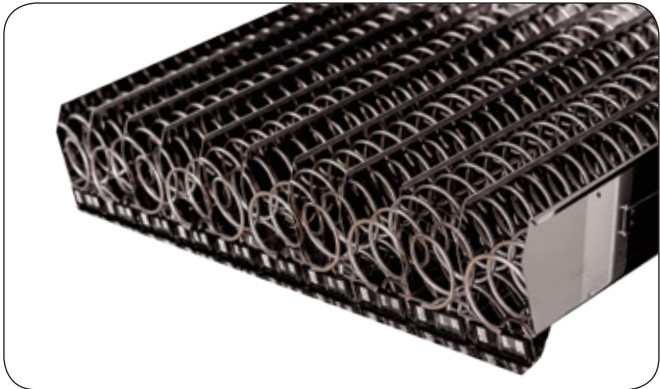


Item no.	Load capacity
09.SPA1020WF	20 kg

- Strengthened compartment for 10 stainless steel spirals***
- Incl. 10 motors and compartment subdivisions
 - Only 3 strengthened compartments are possible per vending machine



Item no.	Load capacity
09.SPA1040WF	40 kg

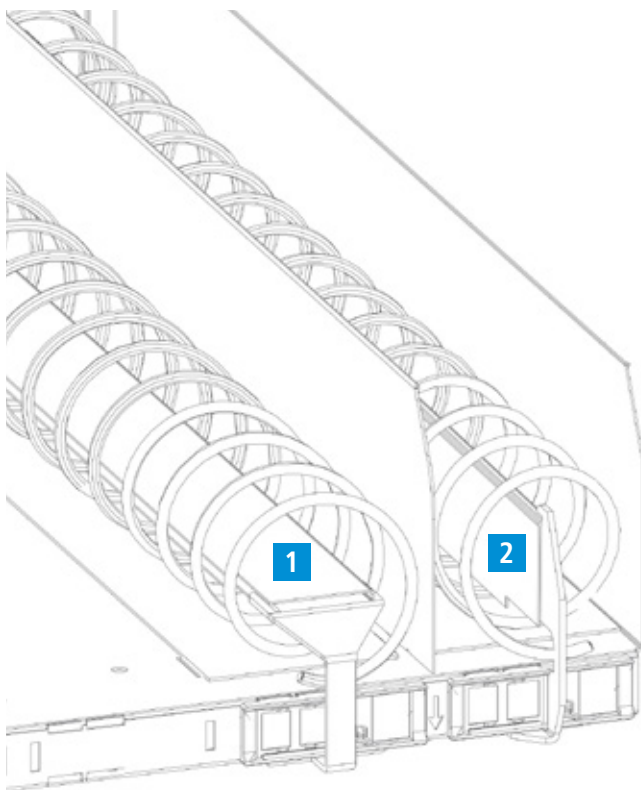


*Stainless steel spirals must be ordered and configured separately

Optional spiral subdivisions



Spiral subdivisions are installed into spirals in order to achieve the right positioning or the best sales result. A basic distinction is made between horizontal and vertical spiral subdivisions.



1

Horizontal subdivision

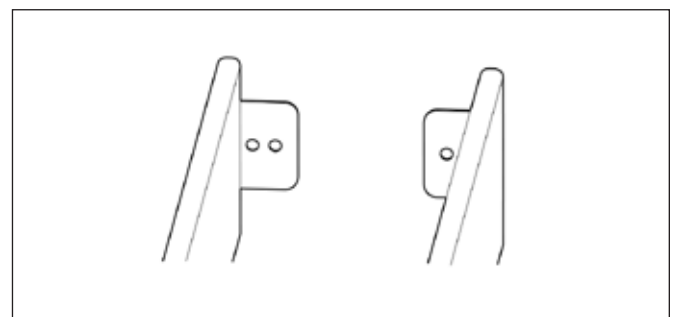
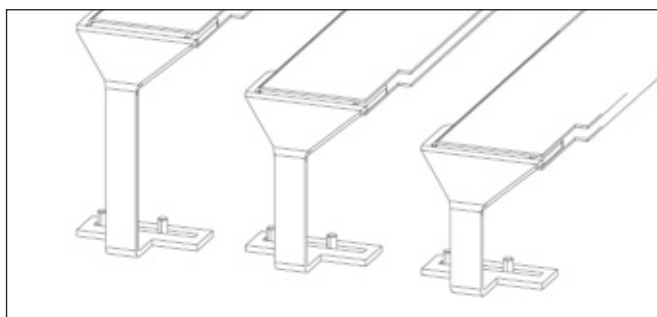
- Available in three different heights, depending on product form and size
- Suitable for bulky products as well as for products with a large support surface

2

Vertical subdivision

- Installation possible in three different positions (narrow, medium, wide)
- Suitable for narrow and tall products that would otherwise fall out of the spiral

You can obtain the optional spiral subdivisions on request



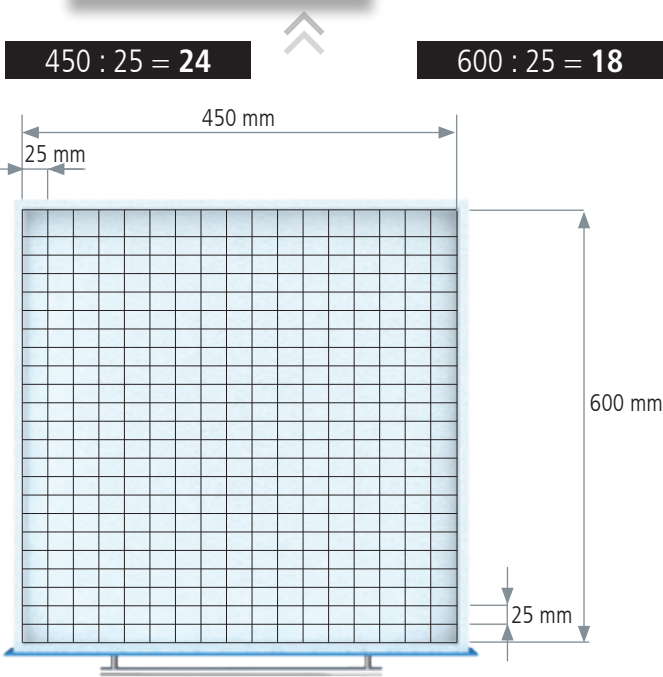
right subdivision

left subdivision

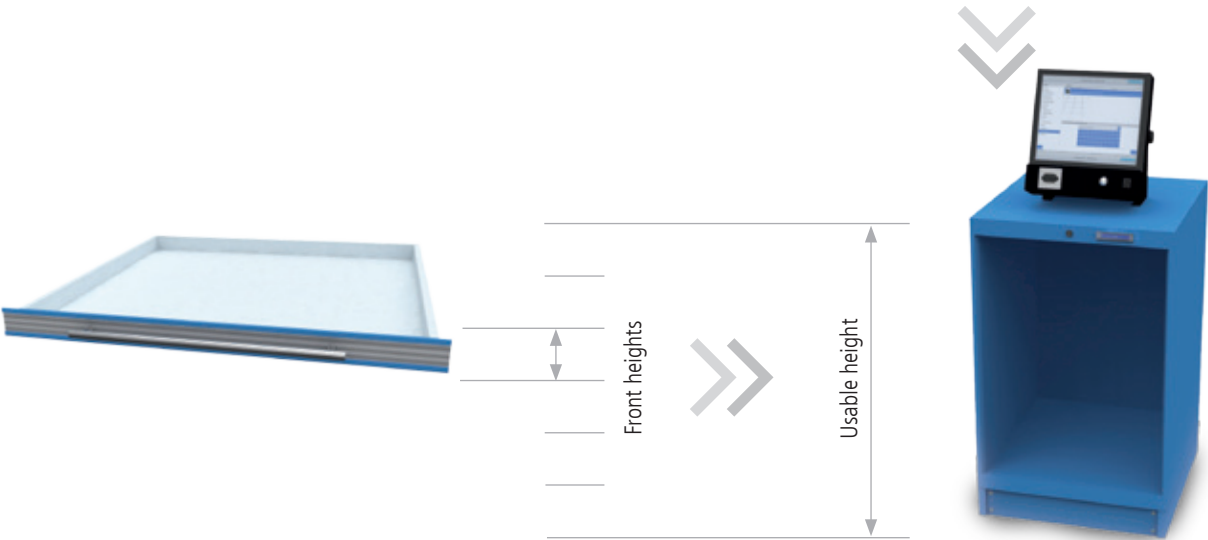
TSM Tool-Server-Modular

Grid:	R 6-24	R 12-24	R 18-24	R 24-24
-------	--------	---------	----------------	---------

Grid subdivision



Usable drawer area



Drawer subdivision



Subdivision & accessories

Series	Series	Series	Series
TSM® 150	TSM® 300	TSM® 450	TSM® 600



	Housing W x D	Housing W x D	Housing W x D	Housing W x D
	230 x 736	380 x 736	550 x 725	700 x 725
Height	Usable heights	Usable heights	Usable heights	Usable heights
1019	–	–	900	900
1319	–	–	–	–
1519	–	–	–	–
1838	1700	1700	–	–



	Drawer W x D	Drawer W x D	Drawer W x D	Drawer W x D
	150 x 600	300 x 600	450 x 600	600 x 600
Front height in mm	Load capacity	Load capacity	Load capacity	Load capacity
50	25 kg	25 kg	60 kg	60 kg
100	25 kg	25 kg	100 kg	100 kg
150	25 kg	25 kg	100 kg	100 kg
200	–	–	100 kg	100 kg



	Series	Series	Series	Series
	150	300	TSM® 450	TSM® 600
	T736 6-24	T736 12-24	T725 18-24	T725 24-24
Grid:	R 6-24	R 12-24	R 18-24	R 24-24

Standard colours

RAL 1023 - Traffic yellow

RAL 3003 - Ruby red

RAL 3020 - Traffic red

RAL 5010 - Gentian blue

RAL 5012 - Light blue

RAL 5013 - Cobalt blue

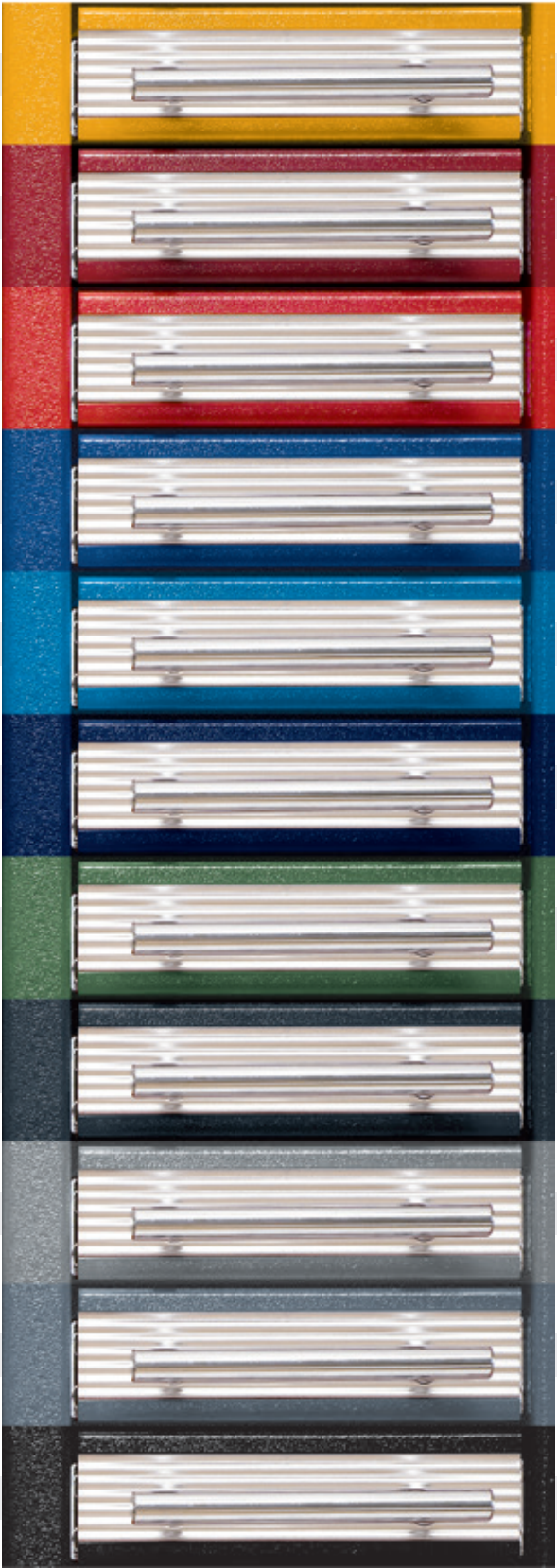
RAL 6011 - Reseda green

RAL 7016 - Anthracite grey

RAL 7035 - Light grey

RAL 7040 - Window grey

RAL 9005 - Jet black





Grid:

R 6-24

R 12-24

R 18-24

R 24-24

150 x 600 mm (W x D)



- All modules including lift truck plinth in the housing colours



Basic module 34-00-00

- Essential for module 150
- At least 1 x 300 mm or 2 x 150 mm extension module
- Fitted with 34 drawers with FH 50 mm
- Plus software licence

Item no.	Usable width in mm	External dimensions (WxDxH) in mm
09.T150G34	150	645 x 736 x 1,880

Extension module 34-00-00

- For extending the TSM®
- Connection through bolting to the preceding module
- Fitted with 34 drawers with FH 50 mm



Item no.	Usable width in mm	External dimensions (WxDxH) in mm
09.T15A34	150	230 x 736 x 1,880



Basic module, empty

- Essential for module 150
- At least 1 x 300 mm or 2 x 150 mm extension module
- Fitted to customer requirements
- Plus software licence

Item no.	Usable width in mm	External dimensions (WxDxH) in mm
09.T150G	150	645 x 736 x 1,880



Extension module, empty

- For extending the TSM®
- Connection through bolting to the preceding module
- Fitted to customer requirements

Item no.	Usable width in mm	External dimensions (WxDxH) in mm
09.T150A	150	230 x 736 x 1,880

Designation of the Tool-Server-Modules:

Version 150 corresponds to the usable dimension of the drawer width:
150 mm

Clear height (usable height): **1700 mm**

Choose your drawer subdivision yourself. The sum of the individual front heights must total 1,700 mm. You can find matching drawers on the next page.

For each module, setup is with a maximum:

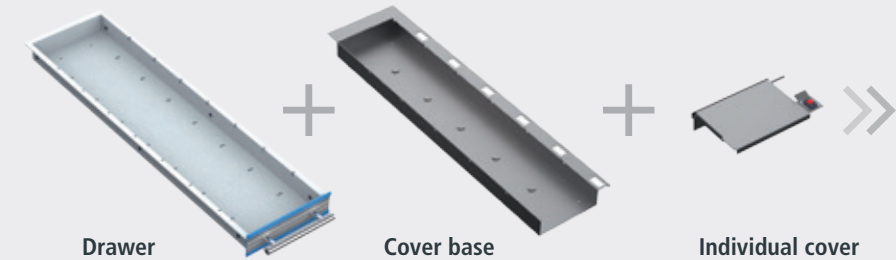
- 34 drawers with FH 50 mm or
- 17 drawers with FH 100 mm or
- 11 drawers with FH 150 mm + 1 drawer with FH 50 mm

 RAL standard colours, see page 22



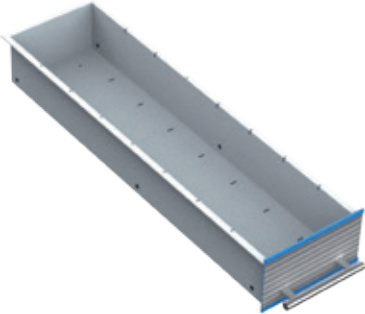
Grid:	R 6-24	R 12-24	R 18-24	R 24-24
-------	--------	---------	---------	---------

Drawers with cover inserts



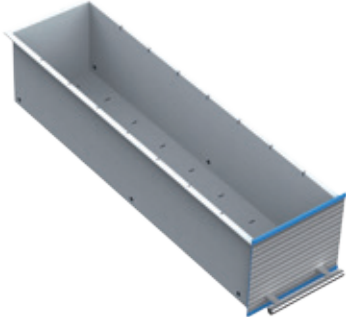
Drawer FH 50 mm
■ Usable dimension 150 x 600 x 35 mm

Item no.	Dimensions in mm (WxDxH)
09.T15.050	150 x 600 x 50



Drawer FH 100 mm
■ Usable dimension 150 x 600 x 85 mm

Item no.	Dimensions in mm (WxDxH)
09.T15.100	150 x 600 x 100



Drawer FH 150 mm
■ Usable dimension 150 x 600 x 135 mm

Item no.	Dimensions in mm (WxDxH)
09.T15.150	150 x 600 x 150



Cover base for FH 50 mm
■ Usable height 32 mm

Item no.	Dimensions in mm (WxDxH)
09.T15KB050	150 x 600 x 50



Cover base for FH 100 mm
■ Usable height 82 mm

Item no.	Dimensions in mm (WxDxH)
09.T15KB100	150 x 600 x 100



Cover base for FH 150 mm
■ Usable height 132 mm

Item no.	Dimensions in mm (WxDxH)
09.T15KB150	150 x 600 x 150



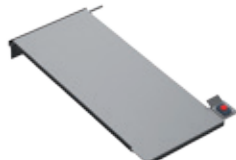
Single covers 100 mm
■ Usable dimension:
120 x 84 x 32 mm
120 x 84 x 82 mm
120 x 84 x 132 mm

Item no.	Dimensions in mm (WxDxH)
09.T15K10005	150 x 100 x 50
09.T15K10010	150 x 100 x 100
09.T15K10015	150 x 100 x 150



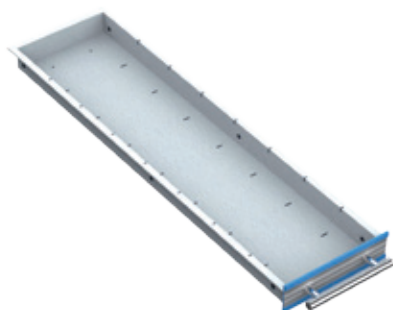
Single covers 200 mm
■ Usable dimension:
120 x 184 x 32 mm
120 x 184 x 82 mm
120 x 184 x 132 mm

Item no.	Dimensions in mm (WxDxH)
09.T15K20005	150 x 200 x 50
09.T15K20010	150 x 200 x 100
09.T15K20015	150 x 200 x 150



Single covers 300 mm
■ Usable dimension:
120 x 284 x 32 mm
120 x 284 x 82 mm
120 x 284 x 132 mm

Item no.	Dimensions in mm (WxDxH)
09.T15K30005	150 x 300 x 50
09.T15K30010	150 x 300 x 100
09.T15K30015	150 x 300 x 150



Drawer FH 50 mm

- Usable dimension 150 x 600 x 35 mm

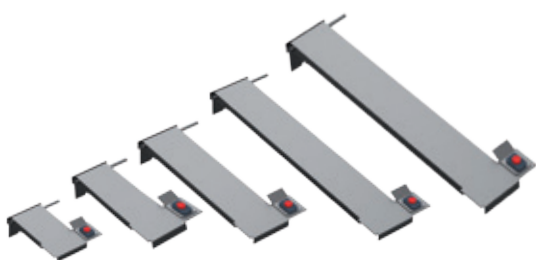
Item no.	Dimensions in mm (WxDxH)
09.T15.050	150 x 600 x 50



Double cover base only for FH 50 mm

- Width **per cover base** 75 mm
- Usable height 32 mm

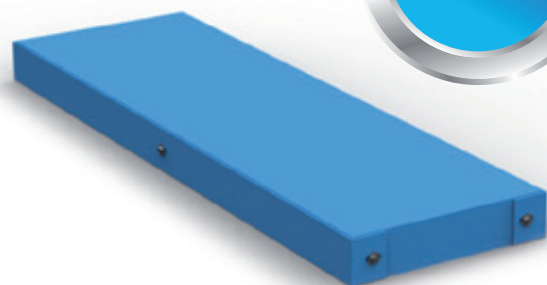
Item no.	Dimensions in mm (WxDxH)
09.T15KB2050	150 x 600 x 50



Single covers only for FH 50 mm

- Usable dimension: 44 x 84 x 32 mm
 - 44 x 141 x 32 mm
 - 44 x 184 x 32 mm
 - 44 x 284 x 32 mm
 - 44 x 584 x 32 mm

Item no.	Dimensions in mm (WxDxH)
09.T75K10005	75 x 100 x 50
09.T75K15005	75 x 150 x 50
09.T75K20005	75 x 200 x 50
09.T75K30005	75 x 300 x 50
09.T75K60005	75 x 600 x 50

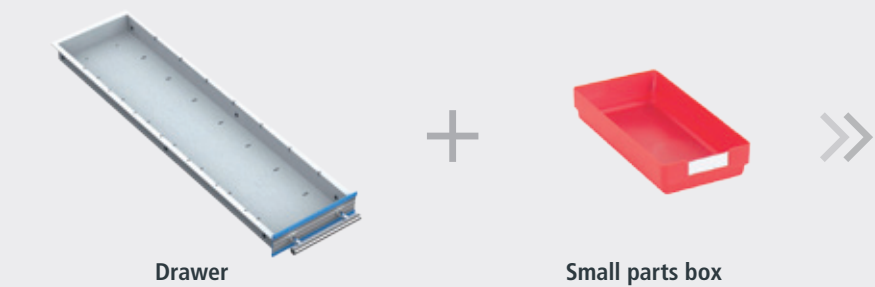


Lift truck plinth for TSM® 150

Item no.	Dimensions in mm (WxDxH)
09.SOC 150	235 x 750 x 50

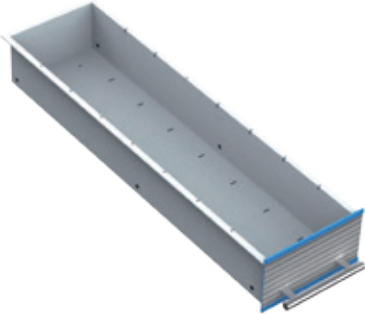
Grid:	R 6-24	R 12-24	R 18-24	R 24-24
-------	--------	---------	---------	---------

Drawer inserts



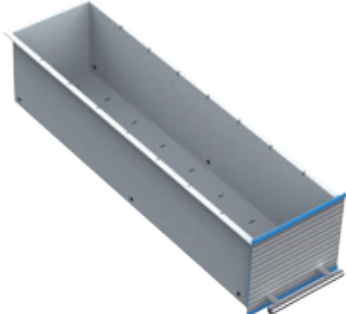
Drawer FH 50 mm
■ Usable dimension 150 x 600 x 35 mm

Item no.	Dimensions in mm (WxDxH)
09.T15.050	150 x 600 x 50



Drawer FH 100 mm
■ Usable dimension 150 x 600 x 85 mm

Item no.	Dimensions in mm (WxDxH)
09.T15.100	150 x 600 x 100



Drawer FH 150 mm
■ Usable dimension 150 x 600 x 135 mm

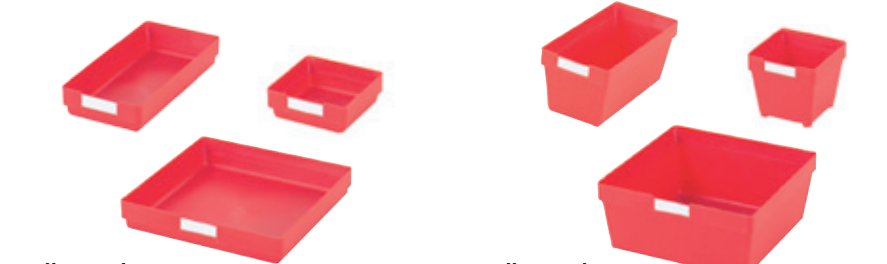
Item no.	Dimensions in mm (WxDxH)
09.T15.150	150 x 600 x 150



Dividers
■ For lateral division of the drawers

Item no.	Dimensions in mm (WxH)
09.T3050150	150 x 50
09.T30100150	150 x 100
09.T30150150	150 x 150

Small parts boxes



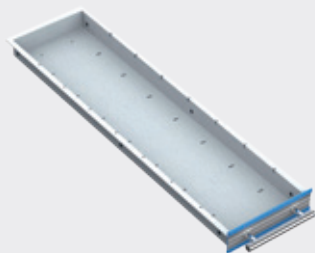
Small parts boxes
■ for front height 50 mm

Item no.	Dimensions in mm (WxDxH)
53.075.075.30	75 x 75 x 28
53.150.075.30	75 x 150 x 28
53.150.150.30	150 x 150 x 28

Small parts boxes
■ for front height 100 mm

Item no.	Dimensions in mm (WxDxH)
53.075.075.65	75 x 75 x 65
53.150.075.65	75 x 150 x 65
53.150.150.65	150 x 150 x 65





Drawer



Trough plate

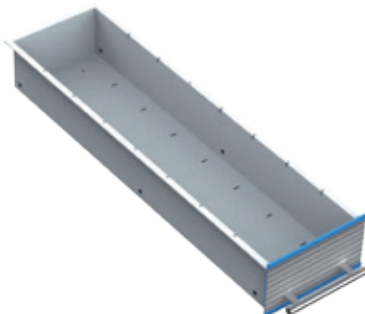


Trough divider

**Drawer FH 50 mm**

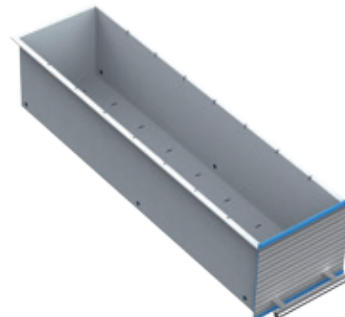
- Usable dimension 150 x 600 x 35 mm

Item no.	Dimensions in mm (WxDxH)
09.T15.050	150 x 600 x 50

**Drawer FH 100 mm**

- Usable dimension 150 x 600 x 85 mm

Item no.	Dimensions in mm (WxDxH)
09.T15.100	150 x 600 x 100

**Drawer FH 150 mm**

- Usable dimension 150 x 600 x 135 mm

Item no.	Dimensions in mm (WxDxH)
09.T15.150	150 x 600 x 150

Trough plates**Trough plates**

- With 2 troughs 70 mm

Item no.	Dimensions in mm (WxDxH)
50.002.070	150 x 150 x 30

**Trough plates**

- With 3 troughs 46 mm

Item no.	Dimensions in mm (WxDxH)
50.003.046	150 x 150 x 30

**Trough plates**

- With 4 troughs 34 mm

Item no.	Dimensions in mm (WxDxH)
50.004.034	150 x 150 x 30

Trough dividers**Trough dividers**

- For trough plate with 2 troughs

Item no.	Width in mm
51.002.070	70

**Trough dividers**

- For trough plate with 3 troughs

Item no.	Width in mm
51.003.046	46

**Trough dividers**

- For trough plate with 4 troughs

Item no.	Width in mm
51.004.034	34

Grid:

R 6-24

R 12-24

R 18-24

R 24-24

300 x 600 mm (W x D)



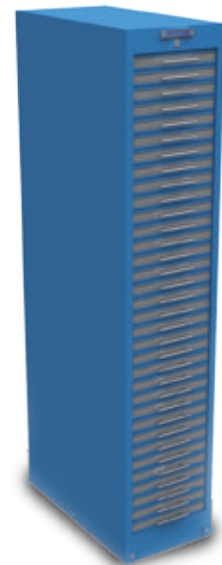
- All modules including lift truck plinth in the housing colours



Basic module 34-00-00

- Fitted with 34 drawers FH 50 mm
- Plus software licence

Item no.	Usable width in mm	External dimensions (WxDxH) in mm	
09.T30G34	300	795 x 736 x 1,880	



Extension module 34-00-00

- For extending the TSM®
- Connection through bolting to the preceding module
- Fitted with 34 drawers with FH 50 mm

Item no.	Usable width in mm	External dimensions (WxDxH) in mm
09.T30A34	300	380 x 736 x 1,880



Basic module, empty

- Fitted to customer requirements
- Plus software licence

Item no.	Usable width in mm	External dimensions (WxDxH) in mm
09.T300G	300	795 x 736 x 1,880



Extension module, empty

- For extending the TSM®
- Connection through bolting to the preceding module
- Fitted to customer requirements

Item no.	Usable width in mm	External dimensions (WxDxH) in mm	
09.T300A	300	380 x 736 x 1,880	

Designation of the Tool-Server-Module:

Version 300 corresponds to the usable dimension of the drawer width:
300 mm

Clear height (usable height): **1700 mm**

Choose your drawer subdivision yourself. The sum of the individual front heights must total 1,700 mm. You can find matching drawers on the next page.

For each module, setup is with a maximum:

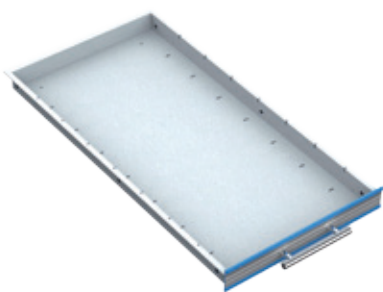
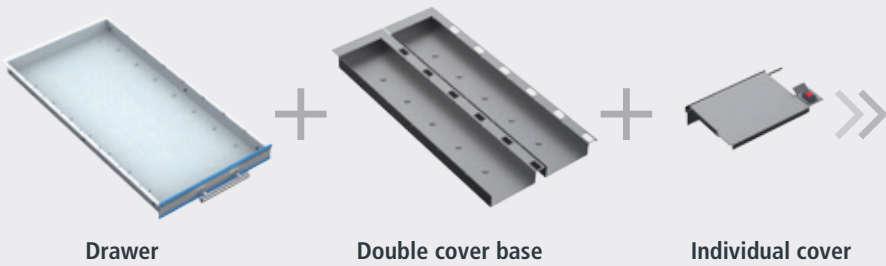
- **34** drawers with FH 50 mm or
- **17** drawers with FH 100 mm or
- **11** drawers with FH 150 mm + **1** drawer with FH 50 mm

 RAL standard colours, see page 22



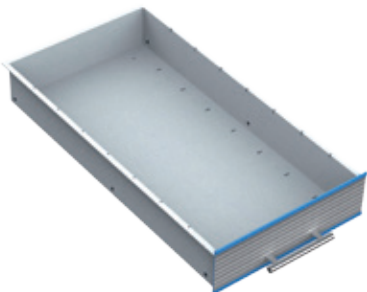
Grid:	R 6-24	R 12-24	R 18-24	R 24-24
-------	--------	---------	---------	---------

Drawers with cover inserts



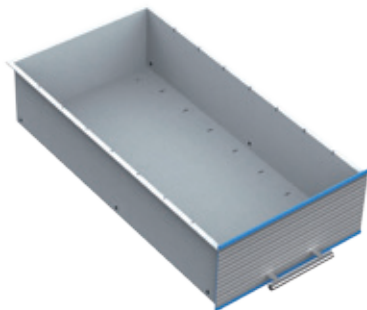
Drawer FH 50 mm
■ Usable dimension 300 x 600 x 35 mm

Item no.	Dimensions in mm (WxDxH)
09.T30.050	300 x 600 x 50



Drawer FH 100 mm
■ Usable dimension 300 x 600 x 85 mm

Item no.	Dimensions in mm (WxDxH)
09.T30.100	300 x 600 x 100



Drawer FH 150 mm
■ Usable dimension 300 x 600 x 135 mm

Item no.	Dimensions in mm (WxDxH)
09.T30.150	300 x 600 x 150



Double cover base for FH 50 mm
■ Width **per cover base** 150 mm
■ Usable height 32 mm

Item no.	Dimensions in mm (WxDxH)
09.T30KB2050	300 x 600 x 50



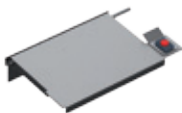
Double cover base for FH 100 mm
■ Width **per cover base** 150 mm
■ Usable height 82 mm

Item no.	Dimensions in mm (WxDxH)
09.T30KB20100	300 x 600 x 100



Double cover base for FH 150 mm
■ Width **per cover base** 150 mm
■ Usable height 132 mm

Item no.	Dimensions in mm (WxDxH)
09.T30KB20150	300 x 600 x 150



Single covers 100 mm
■ Usable dimension:
120 x 84 x 32 mm
120 x 84 x 82 mm
120 x 84 x 132 mm

Item no.	Dimensions in mm (WxDxH)
09.T15K10005	150 x 100 x 50
09.T15K10010	150 x 100 x 100
09.T15K10015	150 x 100 x 150



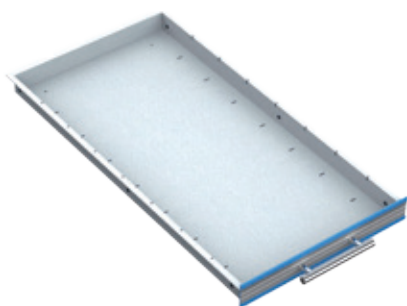
Single covers 200 mm
■ Usable dimension:
120 x 184 x 32 mm
120 x 184 x 82 mm
120 x 184 x 132 mm

Item no.	Dimensions in mm (WxDxH)
09.T15K20005	150 x 200 x 50
09.T15K20010	150 x 200 x 100
09.T15K20015	150 x 200 x 150



Single covers 300 mm
■ Usable dimension:
120 x 284 x 32 mm
120 x 284 x 82 mm
120 x 284 x 132 mm

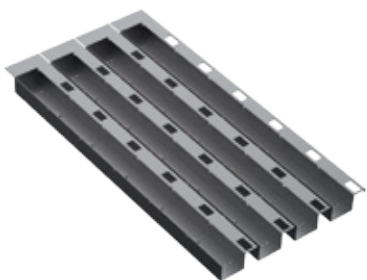
Item no.	Dimensions in mm (WxDxH)
09.T15K30005	150 x 300 x 50
09.T15K30010	150 x 300 x 100
09.T15K30015	150 x 300 x 150



Drawer FH 50 mm

- Usable dimension 300 x 600 x 35 mm

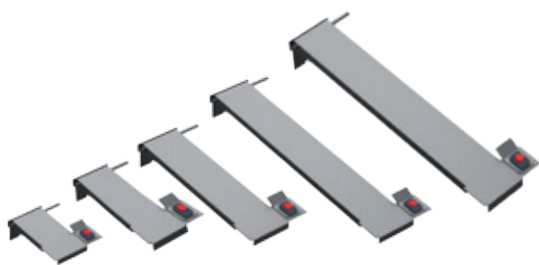
Item no.	Dimensions in mm (WxDxH)
09.T30.050	300 x 600 x 50



4-compartment cover base only for FH 50 mm

- Width **per cover base** 75 mm
- Usable height 32 mm

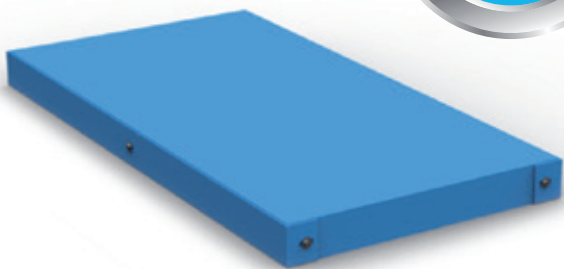
Item no.	Dimensions in mm (WxDxH)
09.T30KB4050	300 x 600 x 50



Single covers only for FH 50 mm

- Usable dimension: 44 x 84 x 32 mm
 - 44 x 141 x 32 mm
 - 44 x 184 x 32 mm
 - 44 x 284 x 32 mm
 - 44 x 584 x 32 mm

Item no.	Dimensions in mm (WxDxH)
09.T75K10005	75 x 100 x 50
09.T75K15005	75 x 150 x 50
09.T75K20005	75 x 200 x 50
09.T75K30005	75 x 300 x 50
09.T75K60005	75 x 600 x 50

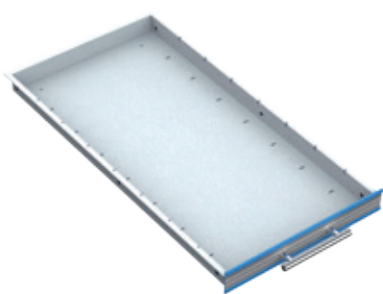
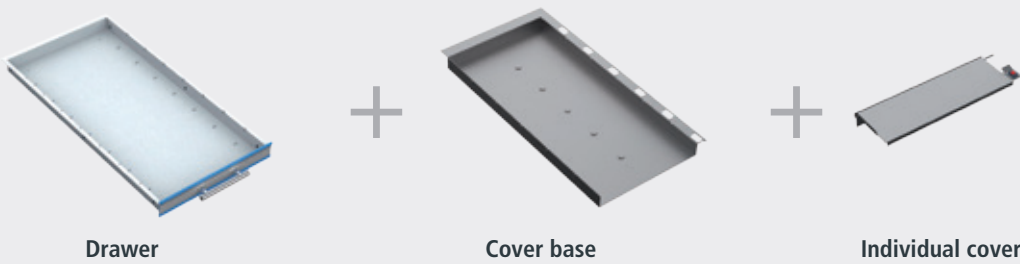


Lift truck plinth for TSM® 300

Item no.	Dimensions in mm (WxDxH)
09.SOC300	385 x 750 x 50

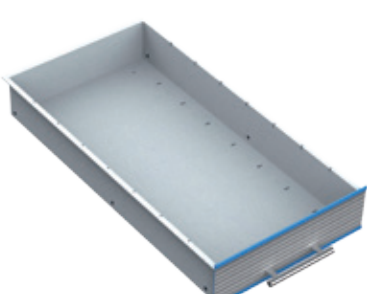
Grid:	R 6-24	R 12-24	R 18-24	R 24-24
-------	--------	---------	---------	---------

Drawers with cover inserts



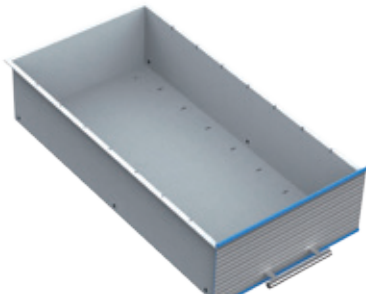
Drawer FH 50 mm
■ Usable dimension 300 x 600 x 35 mm

Item no.	Dimensions in mm (WxDxH)
09.T30.050	300 x 600 x 50



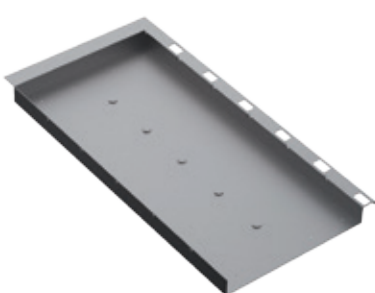
Drawer FH 100 mm
■ Usable dimension 300 x 600 x 85 mm

Item no.	Dimensions in mm (WxDxH)
09.T30.100	300 x 600 x 100



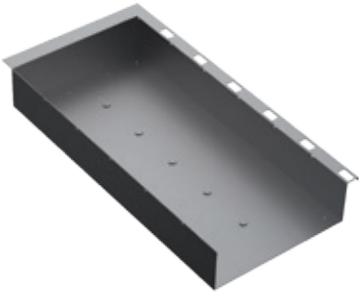
Drawer FH 150 mm
■ Usable dimension 300 x 600 x 135 mm

Item no.	Dimensions in mm (WxDxH)
09.T30.150	300 x 600 x 150



Cover base for FH 50 mm
■ Width **per cover base** 300 mm
■ Usable height 32 mm

Item no.	Dimensions in mm (WxDxH)
09.T30KB050	300 x 600 x 50



Cover base for FH 100 mm
■ Width **per cover base** 300 mm
■ Usable height 82 mm

Item no.	Dimensions in mm (WxDxH)
09.T30KB100	300 x 600 x 100



Cover base for FH 150 mm
■ Width **per cover base** 300 mm
■ Usable height 132 mm

Item no.	Dimensions in mm (WxDxH)
09.T30KB150	300 x 600 x 150



Single covers 100 mm
■ Usable dimension:
270 x 84 x 82 mm
270 x 84 x 132 mm

Item no.	Dimensions in mm (WxDxH)
09.T30K10005	300 x 100 x 50
09.T30K10010	300 x 100 x 100
09.T30K10015	300 x 100 x 150



Single covers 200 mm
■ Usable dimension:
270 x 184 x 82 mm
270 x 184 x 132 mm

Item no.	Dimensions in mm (WxDxH)
09.T30K20005	300 x 200 x 50
09.T30K20010	300 x 200 x 100
09.T30K20015	300 x 200 x 150



Single covers 300 mm
■ Usable dimension:
270 x 284 x 82 mm
270 x 284 x 132 mm

Item no.	Dimensions in mm (WxDxH)
09.T30K30005	300 x 300 x 50
09.T30K30010	300 x 300 x 100
09.T30K30015	300 x 300 x 150

New accessories



Label printer with network connection incl. setup and standard label template

- Printer language ZPL
- Print speed: 127 mm/s
- Print resolution 203 dpi, direct thermal printing
- Weight: 1.4 kg
- With power cable, power pack, USB cable, Windows printer driver

Item no.	Dimensions in mm (WxDxH)
09.ETKD.LAN	171 x 210 x 152



Standard labels

- Paper, white
- Permanently adhesive
- 130 labels per roll

Item no.	Dimensions in mm (WxH)
09.ETK.89.28	89 x 28



Card reader

- The newly developed RFID card readers make it possible to integrate your existing access system.

Item no.
EK-5874



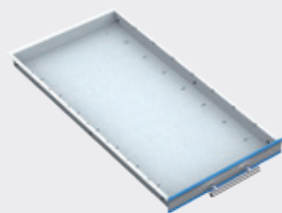
Barcode scanner

- The innovative barcode scanner reads 1D barcodes and 2D-QR codes in a single device including foot

Item no.
EK-5873

Grid:	R 6-24	R 12-24	R 18-24	R 24-24
-------	--------	---------	---------	---------

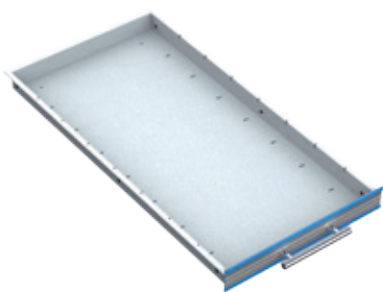
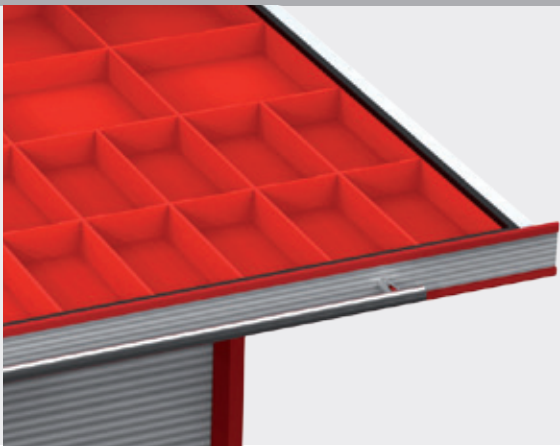
Drawer inserts



Drawer



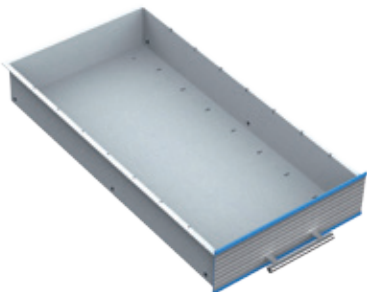
Small parts box



Drawer FH 50 mm

- Usable dimension 300 x 600 x 35 mm

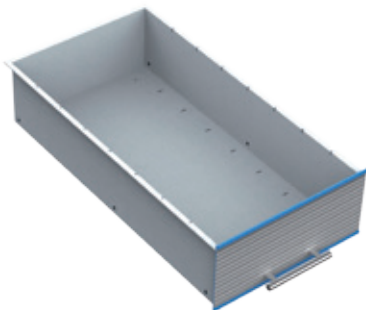
Item no.	Dimensions in mm (WxDxH)
09.T30.050	300 x 600 x 50



Drawer FH 100 mm

- Usable dimension 300 x 600 x 85 mm

Item no.	Dimensions in mm (WxDxH)
09.T30.100	300 x 600 x 100



Drawer FH 150 mm

- Usable dimension 300 x 600 x 135 mm

Item no.	Dimensions in mm (WxDxH)
09.T30.150	300 x 600 x 150



Dividers

- for lateral division of the drawers

Item no.	Dimensions in mm (W x H)
09.T3050300	300 x 50
09.T30100300	300 x 100
09.T30150300	300 x 150

Small parts boxes



Small parts boxes

- for front height 50 mm

Item no.	Dimensions in mm (WxDxH)
53.075.075.30	75 x 75 x 28
53.150.075.30	75 x 150 x 28
53.150.150.30	150 x 150 x 28

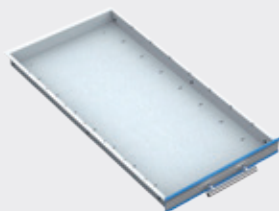


Small parts boxes

- for front height 100 mm

Item no.	Dimensions in mm (WxDxH)
53.075.075.65	75 x 75 x 65
53.150.075.65	75 x 150 x 65
53.150.150.65	150 x 150 x 65





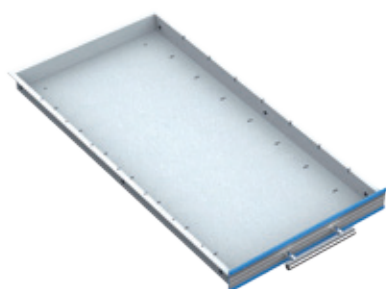
Drawer



Trough plate

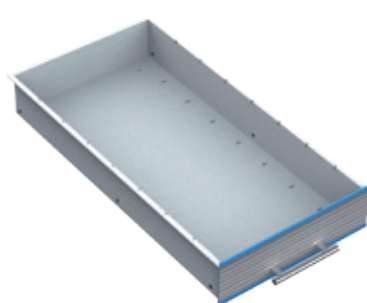


Trough divider

**Drawer FH 50 mm**

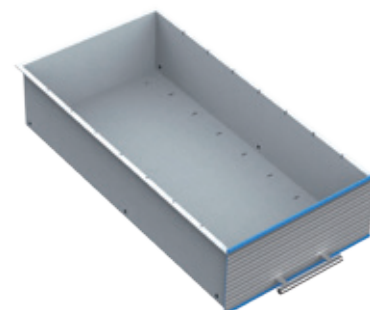
- Usable dimension 300 x 600 x 35 mm

Item no.	Dimensions in mm (WxDxH)
09.T30.050	300 x 600 x 50

**Drawer FH 100 mm**

- Usable dimension 300 x 600 x 85 mm

Item no.	Dimensions in mm (WxDxH)
09.T30.100	300 x 600 x 100

**Drawer FH 150 mm**

- Usable dimension 300 x 600 x 135 mm

Item no.	Dimensions in mm (WxDxH)
09.T30.150	300 x 600 x 150

Trough plates**Trough plates**

- With 2 troughs 70 mm

Item no.	Dimensions in mm (WxDxH)
50.002.070	150 x 150 x 30

**Trough plates**

- With 3 troughs 46 mm

Item no.	Dimensions in mm (WxDxH)
50.003.046	150 x 150 x 30

**Trough plates**

- With 4 troughs 34 mm

Item no.	Dimensions in mm (WxDxH)
50.004.034	150 x 150 x 30

Trough dividers**Trough dividers**

- For trough plate with 2 troughs

Item no.	Width in mm
51.002.070	70

**Trough dividers**

- For trough plate with 3 troughs

Item no.	Width in mm
51.003.046	46

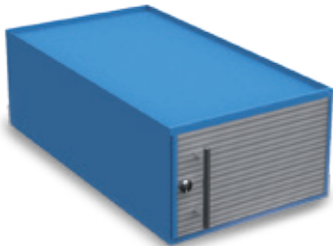
**Trough dividers**

- For trough plate with 4 troughs

Item no.	Width in mm
51.004.034	34

Grid:	R 6-24	R 12-24	R 18-24	R 24-24
-------	--------	---------	---------	---------

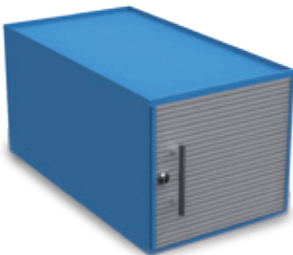
Lockable compartments



Lockable compartment

- Door height 200 mm
- Usable dimension: 265 x 575 x 170 mm (WxDxH)

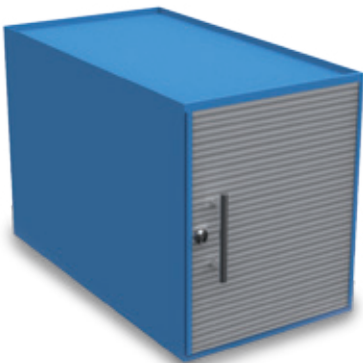
Item no.	Dimensions in mm (WxDxH)
09.T30F200	300 x 600 x 200



Lockable compartment

- Door height 300 mm
- Usable dimension: 265 x 575 x 270 mm (WxDxH)

Item no.	Dimensions in mm (WxDxH)
09.T30F300	300 x 600 x 300



Lockable compartment

- Door height 400 mm
- Usable dimension: 265 x 575 x 370 mm (WxDxH)

Item no.	Dimensions in mm (WxDxH)
09.T30F400	300 x 600 x 400



Lockable compartment

- Door height 500 mm
- Usable dimension: 265 x 575 x 470 mm (WxDxH)

Item no.	Dimensions in mm (WxDxH)
09.T30F500	300 x 600 x 500



Lockable compartment

- Door height 600 mm
- Usable dimension: 265 x 575 x 570 mm (WxDxH)

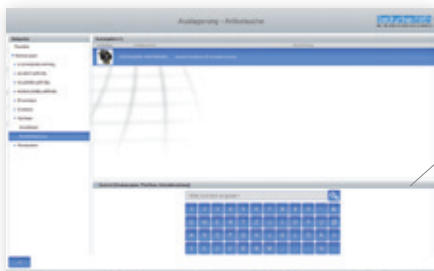
Item no.	Dimensions in mm (WxDxH)
09.T30F600	300 x 600 x 600



- All modules including lift truck plinth in the housing colours



LCD display + emergency unlocking



Touch screen display



Tool-Server-Modular

consisting of

- 1x basic module 150 mm with touch screen display
- 1x extension module 300 mm, fitted with
 - 1x drawer FH 50 mm
 - 11x drawer FH 150 mm
- Software license EK6165

Item no.	Dimensions in mm (WxDxH)
09.T3015.24	1107 x 736 x 1,880



Tool-Server-Modular

consisting of

- 1x basic module 150 mm with touch screen display
- 1x extension module 300 mm, fitted with
 - 12x drawer FH 50 mm
 - 11x drawer FH 100 mm
- Software license

Item no.	Dimensions in mm (WxDxH)
09.T1530.46	1107 x 736 x 1,880



Tool-Server-Modular

consisting of

- 1x basic module 150 mm with touch screen display
- 2x extension module 150 mm, fitted with
 - 34x drawer FH 50 mm
- Software license

Item no.	Dimensions in mm (WxDxH)
09.T3X15.102	1107 x 736 x 1,880

Tool-Server-Modular



Can be used for:

- Industry
- Handicrafts
- Service companies
- Medical operations

Bedrunka+Hirth offers:

- On-site situation analysis
- Offer creation with drawing
- Profitability calculation / cost analysis
- Software interface solution
- Training and induction of employees
- Commissioning
- Service and customer service
- Extension options



Grid:

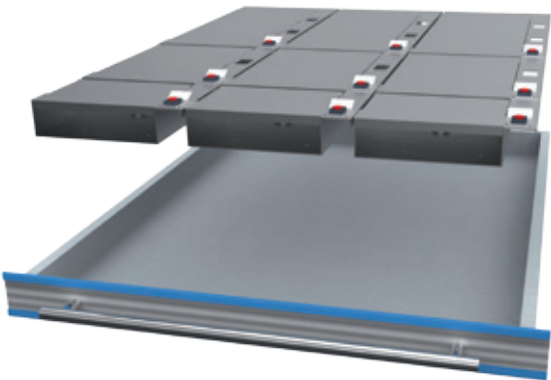
R 6-24

R 12-24

R 18-24

R 24-24

450 x 600 mm (W x D)



- Cabinet housing including lift truck plinth in the housing colour
- Basic module: with touch screen display
- Extension module: without touch screen display
- Drawers with full pull-out
- Housing incl. electronics and control components
- Plus software licence



Basic module

- Empty housing

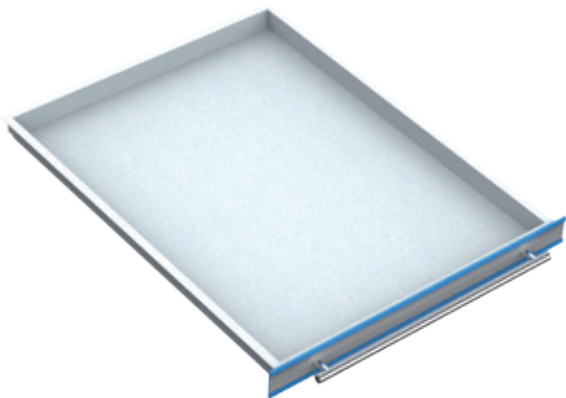
Item no.	Dimensions in mm (WxDxH)
TS5-G0500	550 x 725 x 1,019



Extension module

- Empty housing

Item no.	Dimensions in mm (WxDxH)
TS5-A0500	550 x 725 x 1,019



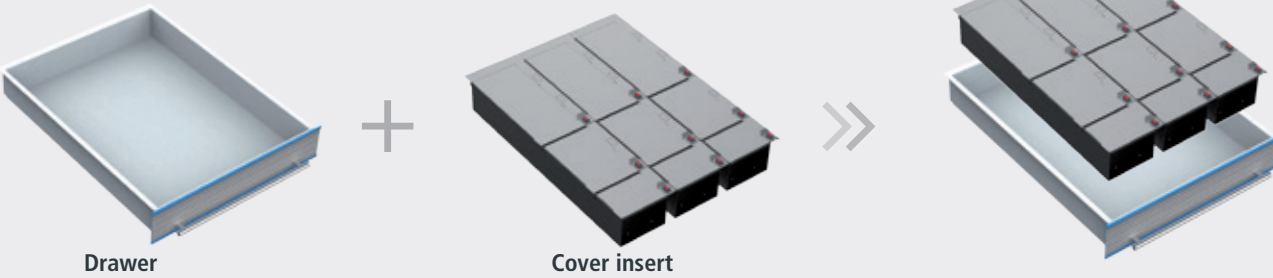
Drawers

- With full pull-out
- Usable area: 450 x 600 mm

Item no.	Width in mm	Front height in mm	Shell height in mm	Load capacity in kg
TSE-00-5-050	450	50	35	60
TSE-00-5-100	450	100	85	100
TSE-00-5-150	450	150	135	100
TSE-00-5-200	450	200	185	100

Grid:	R 6-24	R 12-24	R 18-24	R 24-24
-------	--------	---------	---------	---------

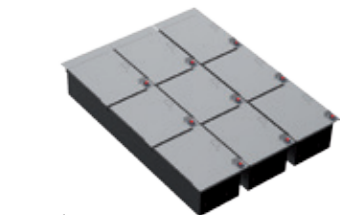
Cover inserts



The cover inserts are made from aluminium laser-cut parts and are firmly connected to the drawers. Individual compartments can be unlocked via the WLAN connection and the software. The unlocked drawer and the compartments are shown on the monitor and on the display in the housing. After the product has been removed or replaced and the drawer pushed back into the housing, the compartment is automatically locked again.

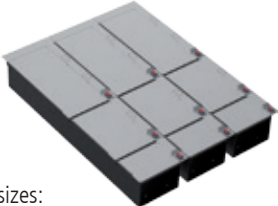
You can also arrange the cover inserts yourself. To do this, please use the module on the next page.

Drawer width 450 mm
Software-controlled for internal drawer dimension 450 x 600 mm



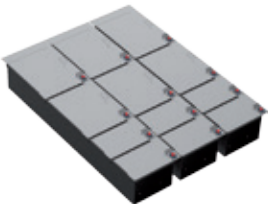
Cover sizes:
■ 3x 3 x 200 mm each

Item no.	FH	Number
TS-5K090-050	50	9
TS-5K090-100	100	9
TS-5K090-150	150	9



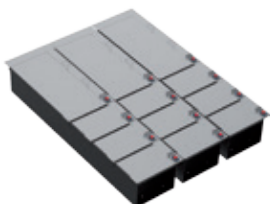
Cover sizes:
■ 3x 1 x 100 mm, 1 x 200 mm, 1 x 300 mm each

Item no.	FH	Number
TS-5K091-050	50	9
TS-5K091-100	100	9
TS-5K091-150	150	9



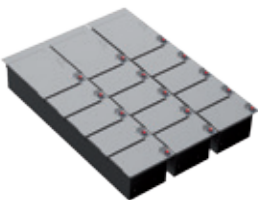
Cover sizes:
■ 3x 2 x 100 mm, 2 x 200 mm each

Item no.	FH	Number
TS-5K120-050	50	12
TS-5K120-100	100	12
TS-5K120-150	150	12



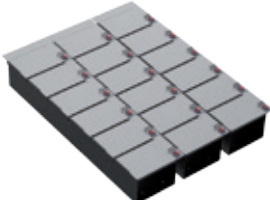
Cover sizes:
■ 3x 3 x 100 mm, 1 x 300 mm each

Item no.	FH	Number
TS-5K121-050	50	12
TS-5K121-100	100	12
TS-5K121-150	150	12



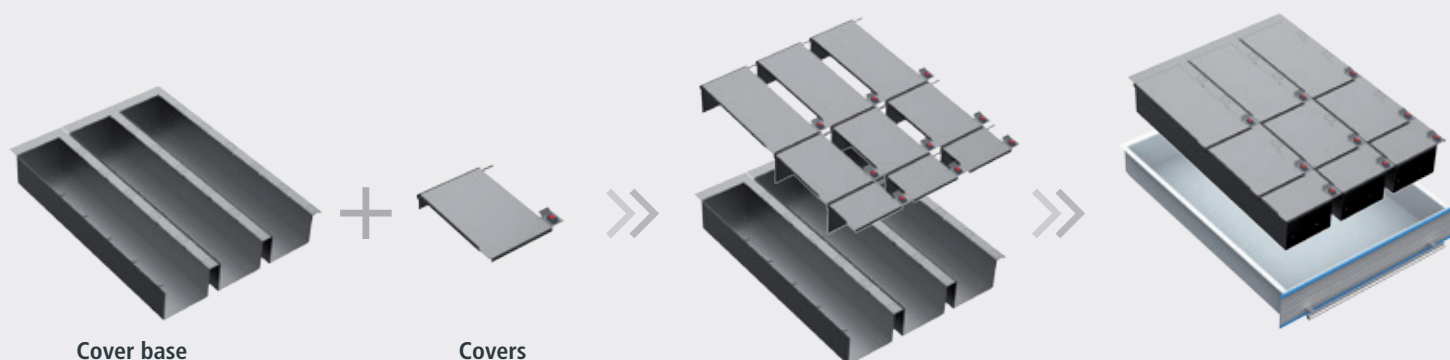
Cover sizes:
■ 3x 4 x 100 mm, 1 x 200 mm each

Item no.	FH	Number
TS-5K150-050	50	15
TS-5K150-100	100	15
TS-5K150-150	150	15

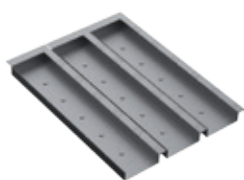


Cover sizes:
■ 3x 6 x 100 mm each

Item no.	FH	Number
TS-5K180-050	50	18
TS-5K180-100	100	18
TS-5K180-150	150	18



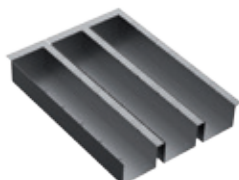
Cover base



Cover base for FH 50

- 3 x cover bases 150 x 600 mm
- For customised fitting of the cover inserts
- For arrangement, see below

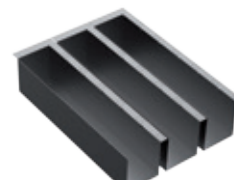
Item no.	Dimensions in mm (WxDxH)
TS-5-KB050	450 x 600 x 32



Cover base for FH 100

- 3 x cover bases 150 x 600 mm
- For customised fitting of the cover inserts
- For arrangement, see below

Item no.	Dimensions in mm (WxDxH)
TS-5-KB100	450 x 600 x 82

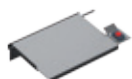


Cover base for FH 150

- 3x cover bases 150 x 600 mm
- For customised fitting of the cover inserts
- For arrangement, see below

Item no.	Dimensions in mm (WxDxH)
TS-5-KB150	450 x 600 x 132

Covers



Single covers 100 mm

- Usable dimension: 120 x 84 x 32 mm
120 x 84 x 82 mm
120 x 84 x 132 mm

Item no.	Dimensions in mm (WxDxH)
09.T15K10005	150 x 100 x 50
09.T15K10010	150 x 100 x 100
09.T15K10015	150 x 100 x 150



Single covers 200 mm

- Usable dimension: 120 x 184 x 32 mm
120 x 184 x 82 mm
120 x 184 x 132 mm

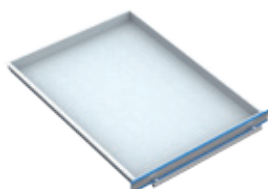
Item no.	Dimensions in mm (WxDxH)
09.T15K20005	150 x 200 x 50
09.T15K20010	150 x 200 x 100
09.T15K20015	150 x 200 x 150



Single covers 300 mm

- Usable dimension: 120 x 284 x 32 mm
120 x 284 x 82 mm
120 x 284 x 132 mm

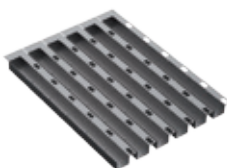
Item no.	Dimensions in mm (WxDxH)
09.T15K30005	150 x 300 x 50
09.T15K30010	150 x 300 x 100
09.T15K30015	150 x 300 x 150



Drawer FH 50 mm

- Usable dimension 450 x 600 x 35 mm

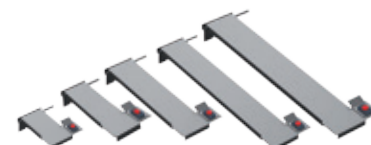
Item no.	Dimensions in mm (WxDxH)
TSE-00-5-050	450 x 600 x 50



6-compartment cover base only for FH 50 mm

- Width per cover base 75 mm
- Usable height 32 mm

Item no.	Dimensions in mm (WxDxH)
09.T45KB6050	450 x 600 x 50



Single covers only for FH 50 mm

- Usable dimension: 44 x 84 x 32 mm
44 x 141 x 32 mm
44 x 184 x 32 mm
44 x 284 x 32 mm
44 x 584 x 320 mm

Item no.	Dimensions in mm (WxDxH)
09.T75K10005	75 x 100 x 50
09.T75K15005	75 x 150 x 50
09.T75K20005	75 x 200 x 50
09.T75K30005	75 x 300 x 50
09.T75K60005	75 x 600 x 50

Grid:

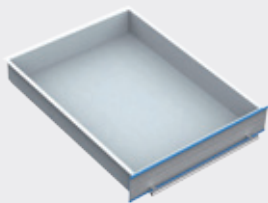
R 6-24

R 12-24

R 18-24

R 24-24

Dividing materials for customised arrangement



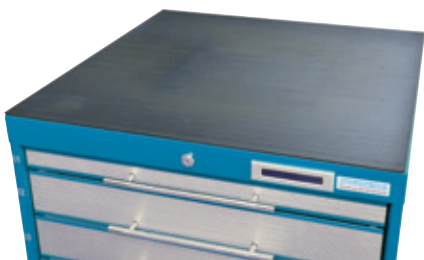
Drawer



Trough plate



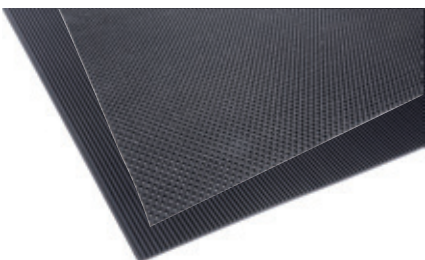
Trough divider



Corrugated rubber mat for top of cabinet

- Oil-proof
- Customised to external housing dimensions

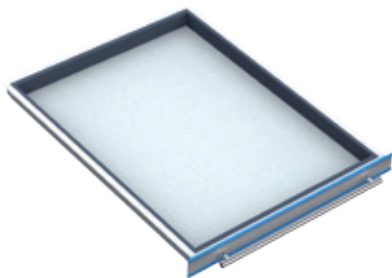
Item no.	Module width
TS-5-60	550



Inserts for drawer

- Customised to internal drawer dimensions

Item no.	Designs
TS-5-80	Non-slip mat
TS-5-70	Corrugated rubber



Spacer bars for drawer width 450

- For balancing and fixing trough plates and small parts boxes in the drawers, VE = 4 pcs.

Item no.	FH	Subdivisions
TS-5-01-D050	50	TP
TS-5-10-D050	50	SPB
TS-5-10-D100	100	SPB



Trough plates

- With 2 troughs 70 mm

Item no.	Dimensions in mm (WxDxH)
50.002.070	150 x 150 x 30



Trough plates

- With 3 troughs 46 mm

Item no.	Dimensions in mm (WxDxH)
50.003.046	150 x 150 x 30



Trough plates

- With 4 troughs 34 mm

Item no.	Dimensions in mm (WxDxH)
50.004.034	150 x 150 x 30



Trough dividers

- For trough plate with 2 troughs

Item no.	Width in mm
51.002.070	70



Trough dividers

- For trough plate with 3 troughs

Item no.	Width in mm
51.003.046	46

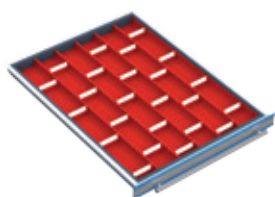


Trough dividers

- For trough plate with 4 troughs

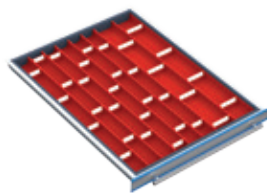
Item no.	Width in mm
51.004.034	34

Customisations for internal drawer dimension 450 x 600 mm

**Trough plates**

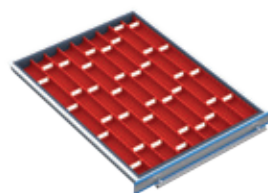
- 12 x TP with 2 troughs
- 24 x dividers

Item no.	FH
TS-5-01	50

**Trough plates**

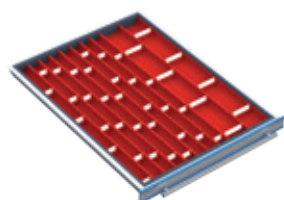
- 4 x TP with 2 troughs + 8 x DIV
- 8 x TP with 3 troughs + 24 x DIV

Item no.	FH
TS-5-02	50

**Trough plates**

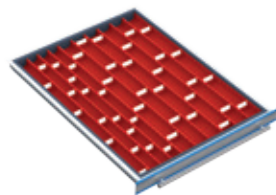
- 12 x TP with 3 troughs
- 36 x dividers

Item no.	FH
TS-5-03	50

**Trough plates**

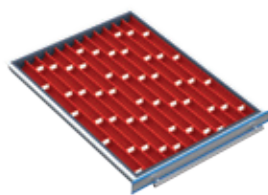
- 4 x TP with 2 troughs + 8 x DIV
- 8 x TP with 4 troughs + 32 x DIV

Item no.	FH
TS-5-04	50

**Trough plates**

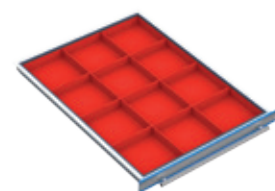
- 8 x TP with 3 troughs + 24 x DIV
- 4 x TP with 4 troughs + 18 x DIV

Item no.	FH
TS-5-05	50

**Trough plates**

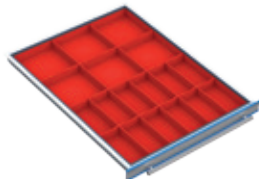
- 12 x TP with 4 troughs
- 48 x dividers

Item no.	FH
TS-5-06	50

**Plastic small parts boxes**

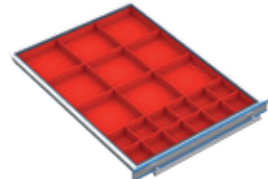
- 12 x SPB 150 x 150 mm

Item no.	FH
TS-5-10-050	50
TS-5-10-100	100

**Plastic small parts boxes**

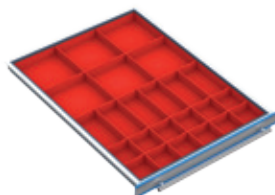
- 12 x SPB 75 x 150 mm
- 6 x SPB 150 x 150 mm

Item no.	FH
TS-5-11-050	50
TS-5-11-100	100

**Plastic small parts boxes**

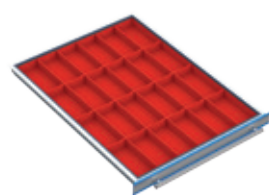
- 12 x SPB 75 x 75 mm
- 9 x SPB 150 x 150 mm

Item no.	FH
TS-5-12-050	50
TS-5-12-100	100

**Plastic small parts boxes**

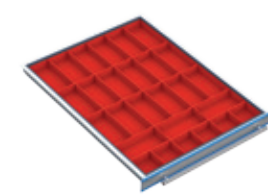
- 12 x SPB 75 x 75 mm
- 6 x SPB 75 x 150 mm
- 6 x SPB 150 x 150 mm

Item no.	FH
TS-5-13-050	50
TS-5-13-100	100

**Plastic small parts boxes**

- 24 x SPB 75 x 150 mm

Item no.	FH
TS-5-14-050	50
TS-5-14-100	100

**Plastic small parts boxes**

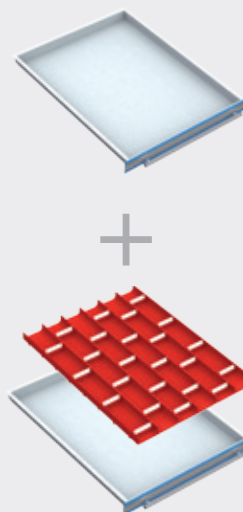
- 6 x SPB 75 x 75 mm
- 21 x SPB 75 x 150 mm

Item no.	FH
TS-5-15-050	50
TS-5-15-100	100

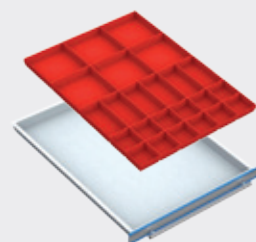
The drawer inserts are made from high-grade plastic and can be inserted into the drawer using the modular principle.

The trough plates and small parts boxes can be inserted lengthwise and widthwise.

- Basic dimensions TP: 150 x 150 mm
- Height SPB FH 50: 28 mm
- Height SPB FH 100: 65 mm
- Incl. spacer bars



or:



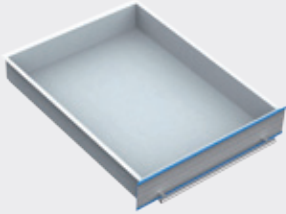
Grid:

R 6-24

R 12-24


R 18-24

R 24-24



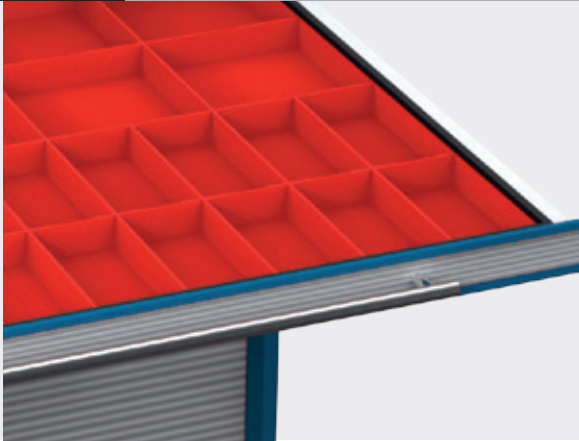
Drawer

+



Small parts box

>>



Small parts boxes
■ for front height 50 mm

Item no.	Dimensions in mm (WxDxH)
53.075.075.30	75 x 75 x 28
53.150.075.30	75 x 150 x 28
53.150.150.30	150 x 150 x 28

Small parts boxes
■ for front height 100 mm

Item no.	Dimensions in mm (WxDxH)
53.075.075.65	75 x 75 x 65
53.150.075.65	75 x 150 x 65
53.150.150.65	150 x 150 x 65

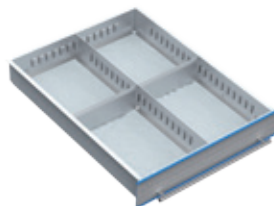
Lift truck plinth for TSM® 450

Item no.	Dimensions in mm (WxDxH)
09.SOC500	550 x 725 x 112

50

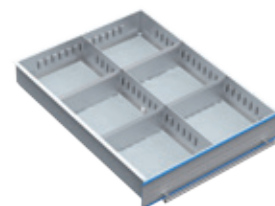
Metal dividers

- Scope of delivery without drawers
- For internal drawer dimension 450 x 600 mm
- Complete sets for inserting into the drawers
- Metal dividers consisting of side and centre compartment rails as well as divider plates
- The compartment rails are made from high-grade, galvanised sheet metal, the divider plates from aluminium
- Various compartment sizes from a front height of 75 mm
- The individual parts needed for a customised layout of the drawers are listed on page 50



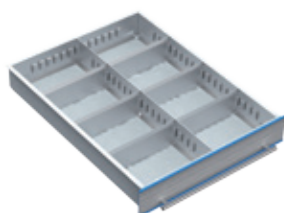
- 4 compartments 225 x 300 mm

Item no.	FH
TS-5-20-100	100
TS-5-20-150	150
TS-5-20-200	200



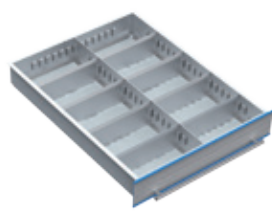
- 6 compartments 225 x 200 mm

Item no.	FH
TS-5-21-100	100
TS-5-21-150	150
TS-5-21-200	200



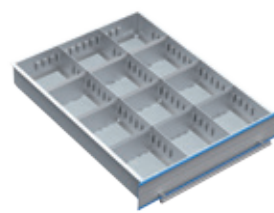
- 8 compartments 225 x 150 mm

Item no.	FH
TS-5-22-100	100
TS-5-22-150	150
TS-5-22-200	200



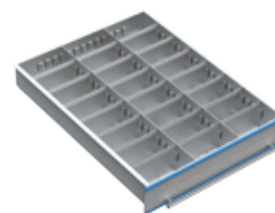
- 2 compartments 225 x 100 mm
- 8 compartments 225 x 125 mm

Item no.	FH
TS-5-23-100	100
TS-5-23-150	150
TS-5-23-200	200



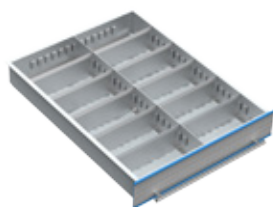
- 12 compartments 150 x 150 mm

Item no.	FH
TS-5-24-100	100
TS-5-24-150	150
TS-5-24-200	200



- 24 compartments 150 x 75 mm

Item no.	FH
TS-5-25-100	100
TS-5-25-150	150
TS-5-25-200	200



- 12 compartments 225 x 100 mm

Item no.	FH
TS-5-26-100	100
TS-5-26-150	150
TS-5-26-200	200



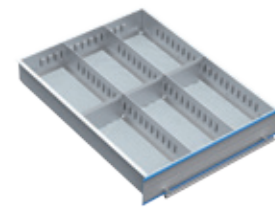
- 12 compartments 225 x 75 mm
- 2 compartments 225 x 150 mm

Item no.	FH
TS-5-27-100	100
TS-5-27-150	150
TS-5-27-200	200



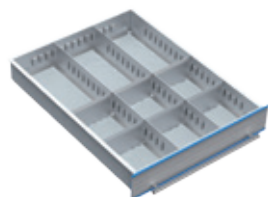
- 16 compartments 225 x 75 mm

Item no.	FH
TS-5-28-100	100
TS-5-28-150	150
TS-5-28-200	200



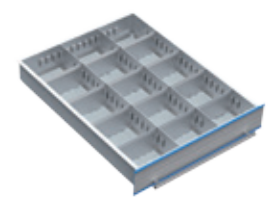
- 6 compartments 150 x 300 mm

Item no.	FH
TS-5-29-100	100
TS-5-29-150	150
TS-5-29-200	200



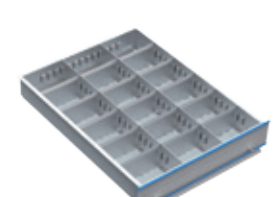
- 6 compartments 150 x 150 mm
- 3 compartments 150 x 300 mm

Item no.	FH
TS-5-30-100	100
TS-5-30-150	150
TS-5-30-200	200



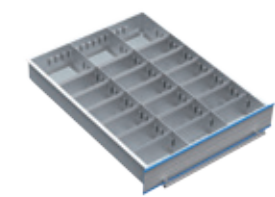
- 3 compartments 150 x 100 mm
- 12 compartments 150 x 125 mm

Item no.	FH
TS-5-31-100	100
TS-5-31-150	150
TS-5-31-200	200



- 18 compartments 150 x 100 mm

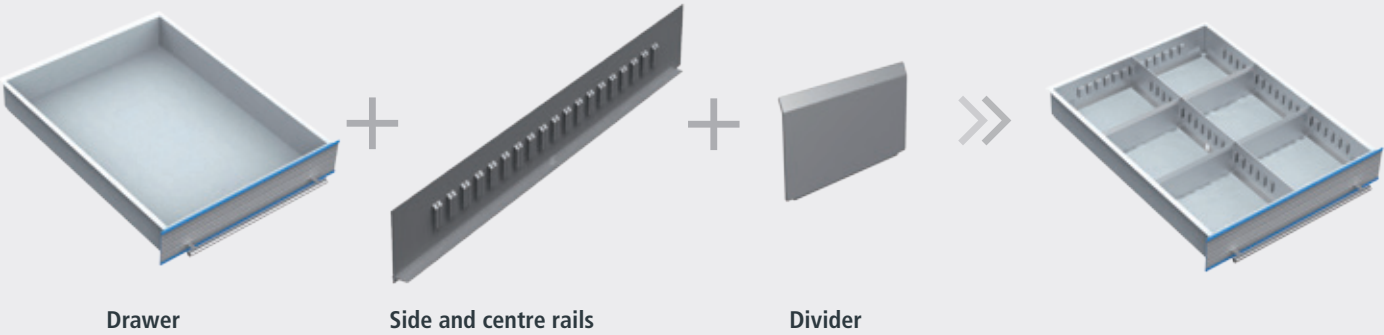
Item no.	FH
TS-5-32-100	100
TS-5-32-150	150
TS-5-32-200	200



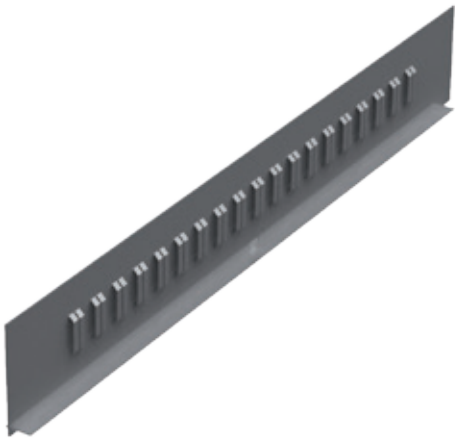
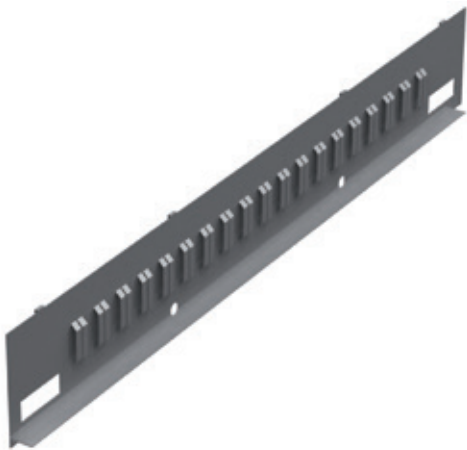
- 18 compartments 150 x 75 mm
- 3 compartments 150 x 150 mm

Item no.	FH
TS-5-33-100	100
TS-5-33-150	150
TS-5-33-200	200

Grid:	R 6-24	R 12-24	R 18-24	R 24-24
-------	--------	---------	---------	---------



Side and centre rails



Side compartment rail for drawer width and drawer depth

- Made from high-quality galvanised sheet metal
- The side compartment rails are hung inside the drawer body
- Supplied in pairs

Item no.	Drawer depth in mm	Front height in mm
TS-5-S100	450	100
TS-5-S150	450	150
TS-5-S200	450	200

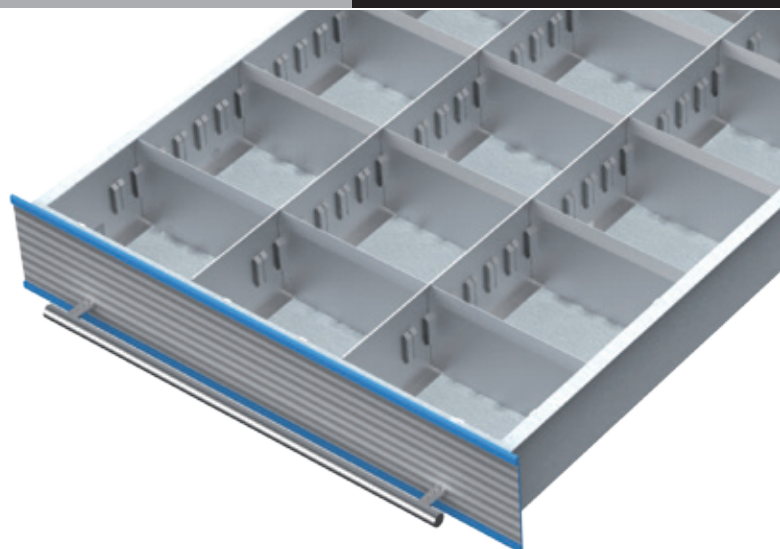
Centre compartment rails

- For lengthwise subdivision of the drawers
- Made from high-quality galvanised sheet metal
- The side compartment rails are hung inside the drawer body

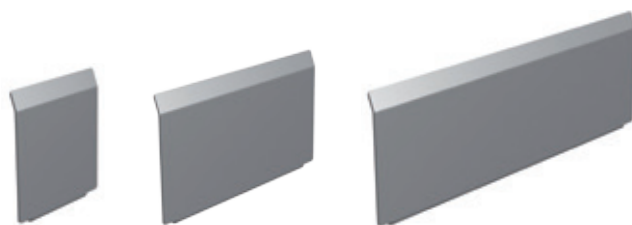
Item no.	Drawer depth in mm	Front height in mm
TS-7-M100	600	100
TS-7-M150	600	150
TS-7-M200	600	200

Dividers

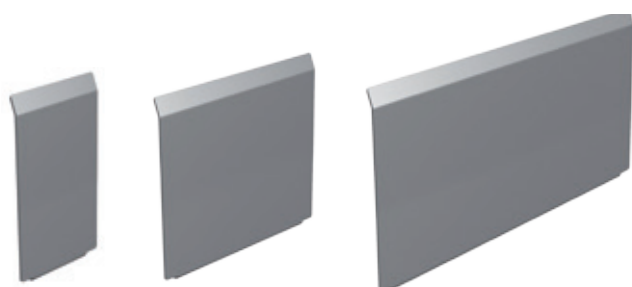
- For lateral division of the drawers
- Made from aluminium
- The lightweight metal dividers can be pushed into the slots on the side and centre rails and labelled



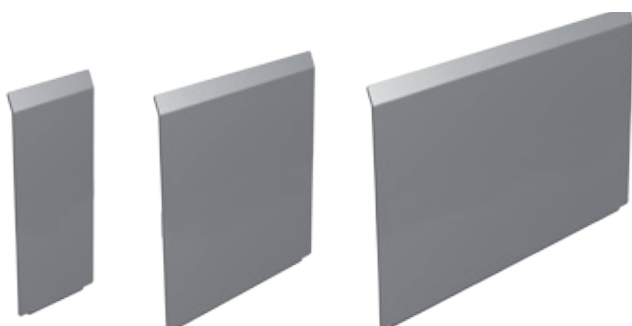
Item no.	Divider width in mm	Front height in mm
TS-30050100	50	100
TS-30075100	75	100
TS-30100100	100	100
TS-30125100	125	100
TS-30150100	150	100
TS-30175100	175	100
TS-30200100	200	100
TS-30225100	225	100
TS-30250100	250	100
TS-30275100	275	100
TS-30300100	300	100



Item no.	Divider width in mm	Front height in mm
TS-30050150	50	150
TS-30075150	75	150
TS-30100150	100	150
TS-30125150	125	150
TS-30150150	150	150
TS-30175150	175	150
TS-30200150	200	150
TS-30225150	225	150
TS-30250150	250	150
TS-30275150	275	150
TS-30300150	300	150



Item no.	Divider width in mm	Front height in mm
TS-30050200	50	200
TS-30075200	75	200
TS-30100200	100	200
TS-30125200	125	200
TS-30150200	150	200
TS-30175200	175	200
TS-30200200	200	200
TS-30225200	225	200
TS-30250200	250	200
TS-30275200	275	200
TS-30300200	300	200



Grid:

R 6-24

R 12-24

R 18-24

24-24

600 x 600 mm (W x D)



■ Cabinet housing including lift truck plinth in the housing
colour

- Basic module: with touch screen display
- Extension module: without touch screen display
- Drawers with full pull-out
- Housing incl. electronics and control components
- Plus software licence



Basic module

- Empty housing

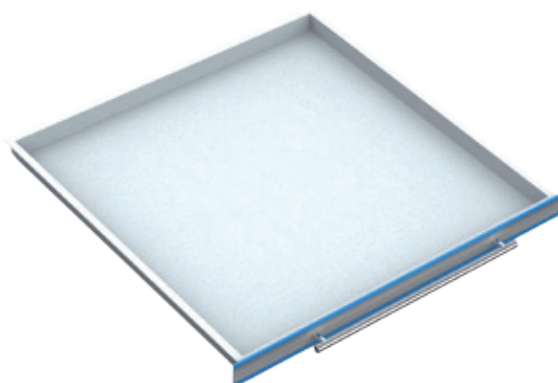
Item no.	Dimensions in mm (WxDxH)
TS5-G0700	700 x 725 x 1,019



Extension module

- Empty housing

Item no.	Dimensions in mm (WxDxH)
TS5-A0700	700 x 725 x 1,019



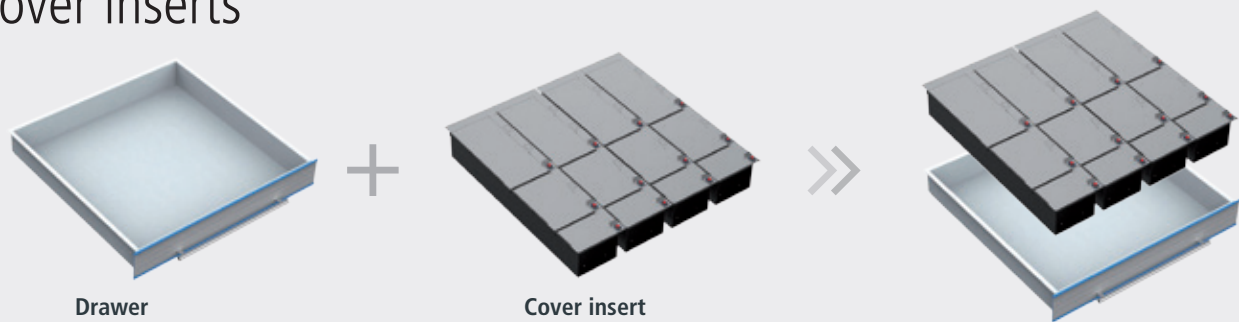
Drawers

- With full pull-out
- Usable area: 600 x 600 mm

Item no.	Width in mm	Front height in mm	Shell height in mm	Load capacity in kg
TSE-00-7-050	600	50	35	60
TSE-00-7-100	600	100	85	100
TSE-00-7-150	600	150	135	100
TSE-00-7-200	600	200	185	100

Grid:	R 6-24	R 12-24	R 18-24	R 24-24
-------	--------	---------	---------	---------

Cover inserts

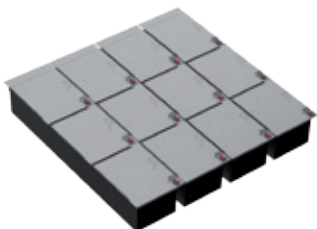


The cover inserts are made from aluminium laser-cut parts and are firmly connected to the drawers. The unlocked drawer and the compartments are shown on the monitor and on the display in the housing. After the product has been removed or replaced and the drawer pushed back into the housing, the compartment is automatically locked again.

You can also arrange the cover inserts yourself. To do this, please use the module on the next page.

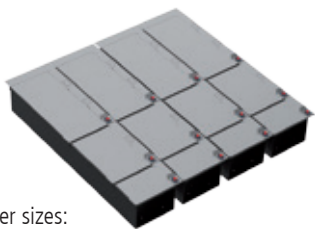
Drawer width 600 mm

- Software-controlled for internal drawer dimension 600 x 600 mm



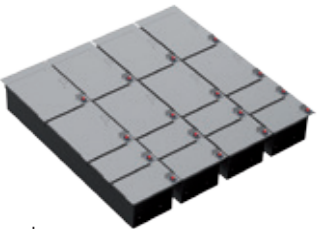
Cover sizes:
■ 4x 3 x 200 mm each

Item no.	FH	Number
TS-7K120-050	50	12
TS-7K120-100	100	12
TS-7K120-150	150	12



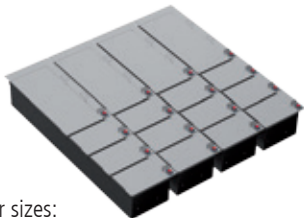
Cover sizes:
■ 4x 1 x 100 mm, 1 x 200 mm, 1 x 300 mm each

Item no.	FH	Number
TS-7K121-050	50	12
TS-7K121-100	100	12
TS-7K121-150	150	12



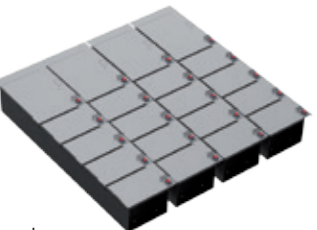
Cover sizes:
■ 4x 2 x 100 mm, 2 x 200 mm each

Item no.	FH	Number
TS-7K160-050	50	16
TS-7K160-100	100	16
TS-7K160-150	150	16



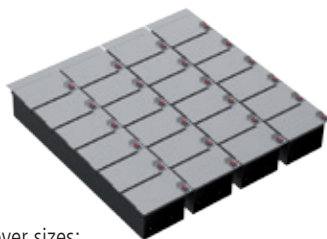
Cover sizes:
■ 4x 3 x 100 mm, 1 x 300 mm each

Item no.	FH	Number
TS-7K161-050	50	16
TS-7K161-100	100	16
TS-7K161-150	150	16



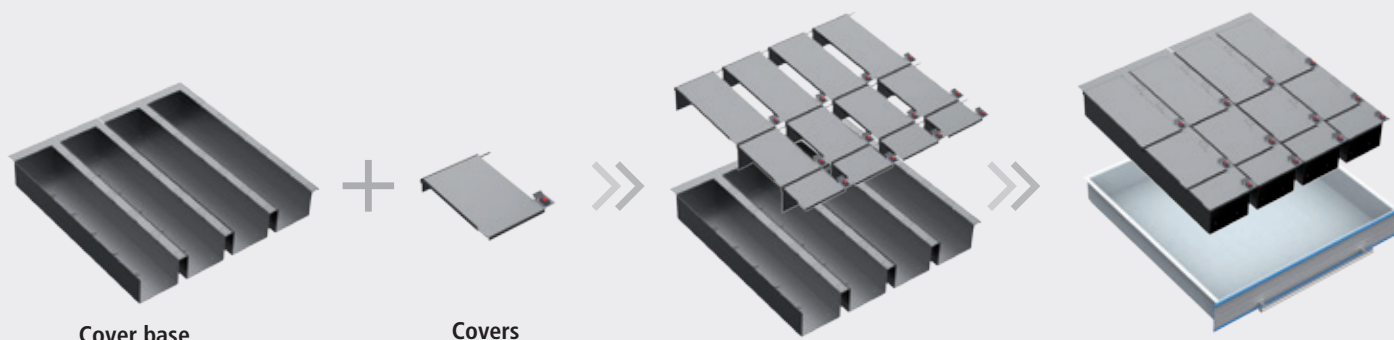
Cover sizes:
■ 4x 4 x 100 mm, 1 x 200 mm each

Item no.	FH	Number
TS-7K200-050	50	20
TS-7K200-100	100	20
TS-7K200-150	150	20



Cover sizes:
■ 4x 6 x 100 mm each

Item no.	FH	Number
TS-7K240-050	50	24
TS-7K240-100	100	24
TS-7K240-150	150	24



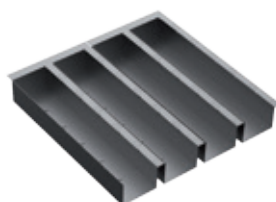
Cover base



Cover base for FH 50

- 4 x cover bases 150 x 600 mm
- For customised fitting of the cover inserts
- For arrangement, see below

Item no.	Dimensions in mm (WxDxH)
TS-7-KB050	600 x 600 x 32



Cover base for FH 100

- 4 x cover bases 150 x 600 mm
- For customised fitting of the cover inserts
- For arrangement, see below

Item no.	Dimensions in mm (WxDxH)
TS-7-KB100	600 x 600 x 82

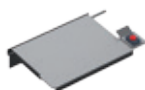


Cover base for FH 1150

- 4 x cover bases 150 x 600 mm
- For customised fitting of the cover inserts
- For arrangement, see below

Item no.	Dimensions in mm (WxDxH)
TS-7-KB150	600 x 600 x 132

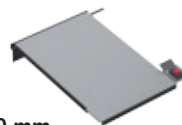
Covers



Single covers 100 mm

- Usable dimension: 120 x 84 x 32 mm
120 x 84 x 82 mm
120 x 84 x 132 mm

Item no.	Dimensions in mm (WxDxH)
09.T15K10005	150 x 100 x 50
09.T15K10010	150 x 100 x 100
09.T15K10015	150 x 100 x 150



Single covers 200 mm

- Usable dimension: 120 x 184 x 32 mm
120 x 184 x 82 mm
120 x 184 x 132 mm

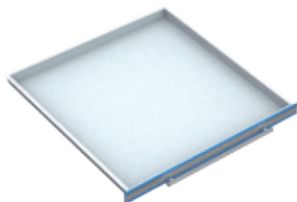
Item no.	Dimensions in mm (WxDxH)
09.T15K20005	150 x 200 x 50
09.T15K20010	150 x 200 x 100
09.T15K20015	150 x 200 x 150



Single covers 300 mm

- Usable dimension: 120 x 284 x 32 mm
120 x 284 x 82 mm
120 x 284 x 132 mm

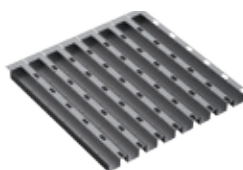
Item no.	Dimensions in mm (WxDxH)
09.T15K30005	150 x 300 x 50
09.T15K30010	150 x 300 x 100
09.T15K30015	150 x 300 x 150



Drawer FH 50 mm

- Usable dimension 600 x 600 x 35 mm

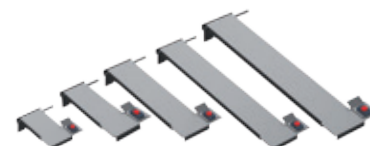
Item no.	Dimensions in mm (WxDxH)
TSE-00-7-050	600 x 600 x 50



8-compartment cover base only for FH 50 mm

- Width per cover base 75 mm
- Usable height 32 mm

Item no.	Dimensions in mm (WxDxH)
09.T60KB8050	600 x 600 x 50

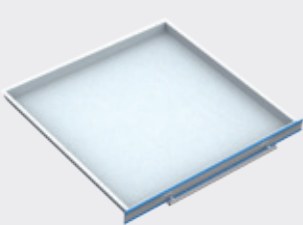


Single covers only for FH 50 mm

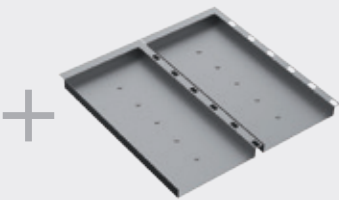
- Usable dimension: 44 x 84 x 32 mm
44 x 141 x 32 mm
44 x 184 x 32 mm
44 x 284 x 32 mm
44 x 584 x 320 mm

Item no.	Dimensions in mm (WxDxH)
09.T75K10005	75 x 100 x 50
09.T75K15005	75 x 150 x 50
09.T75K20005	75 x 200 x 50
09.T75K30005	75 x 300 x 50
09.T75K60005	75 x 600 x 50

Grid:	R 6-24	R 12-24	R 18-24	R 24-24
-------	--------	---------	---------	---------



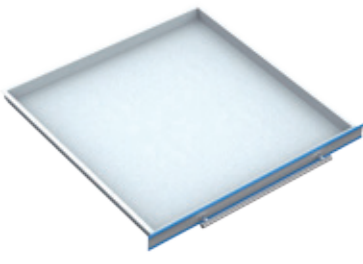
Drawer



Double cover base

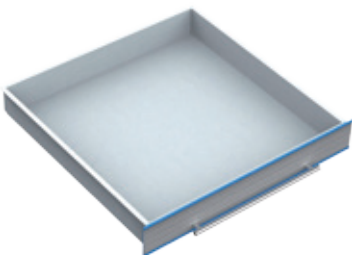


Covers



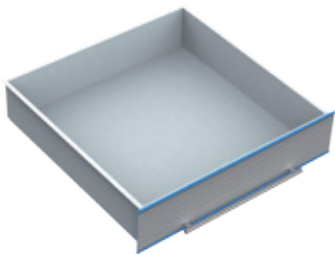
Drawer FH 50 mm
■ Usable dimension 600 x 600 x 35 mm
■ Load 60 kg

Item no.	Dimensions in mm (WxDxH)
TSE-00-7-050	600 x 600 x 50



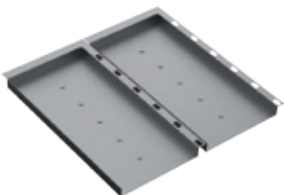
Drawer FH 100 mm
■ Usable dimension 600 x 600 x 85 mm
■ Load 100 kg

Item no.	Dimensions in mm (WxDxH)
TSE-00-7-100	600 x 600 x 100



Drawer FH 150 mm
■ Usable dimension 600 x 600 x 135 mm
■ Load 100 kg

Item no.	Dimensions in mm (WxDxH)
TSE-00-7-150	600 x 600 x 150



Double cover base for FH 50
■ Width **per cover base** 300 x 600 mm
■ For customised fitting of the cover inserts
■ For arrangement, see below

Item no.	Dimensions in mm (WxDxH)
09.T30KB2050	600 x 600 x 32



Double cover base for FH 100
■ Width **per cover base** 300 x 600 mm
■ For customised fitting of the cover inserts
■ For arrangement, see below

Item no.	Dimensions in mm (WxDxH)
09.T30KB2100	600 x 600 x 82



Double cover base for FH 150
■ Width **per cover base** 300 x 600 mm
■ For customised fitting of the cover inserts
■ For arrangement, see below

Item no.	Dimensions in mm (WxDxH)
09.T30KB2150	600 x 600 x 132



Single covers 100 mm
■ Usable dimension: 270 x 84 x 32 mm
270 x 84 x 82 mm
270 x 84 x 132 mm

Item no.	Dimensions in mm (WxDxH)
09.T30K10005	300 x 100 x 50
09.T30K10010	300 x 100 x 100
09.T30K10015	300 x 100 x 150



Single covers 200 mm
■ Usable dimension: 270 x 184 x 32 mm
270 x 184 x 82 mm
270 x 184 x 132 mm

Item no.	Dimensions in mm (WxDxH)
09.T30K20005	300 x 200 x 50
09.T30K20010	300 x 200 x 100
09.T30K20015	300 x 200 x 150



Single covers 300 mm
■ Usable dimension: 270 x 284 x 32 mm
270 x 284 x 82 mm
270 x 284 x 132 mm

Item no.	Dimensions in mm (WxDxH)
09.T30K30005	300 x 300 x 50
09.T30K30010	300 x 300 x 100
09.T30K30015	300 x 300 x 150

New accessories



Label printer with network connection incl. setup and standard label template

- Printer language ZPL
- Print speed: 127 mm/s
- Print resolution 203 dpi, direct thermal printing
- Weight: 1.4 kg
- With power cable, power pack, USB cable, Windows printer driver

Item no.	Dimensions in mm (WxDxH)
09.ETKD.LAN	171 x 210 x 152



Standard labels

- Paper, white
- Permanently adhesive
- 130 labels per roll

Item no.	Dimensions in mm (WxH)
09.ETK.89.28	89 x 28



Card reader

- The newly developed RFID card readers make it possible to integrate your existing access system.

Item no.
EK-5874



Barcode scanner

- The innovative barcode scanner reads 1D barcodes and 2D-QR codes in a single device including foot

Item no.
EK-5873

Grid:

R 6-24

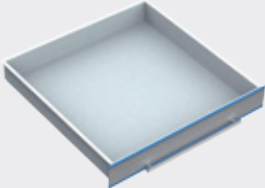
R 12-24

R 18-24

R 24-24


Dividing materials

for customised arrangement




Drawer

+




Trough plate

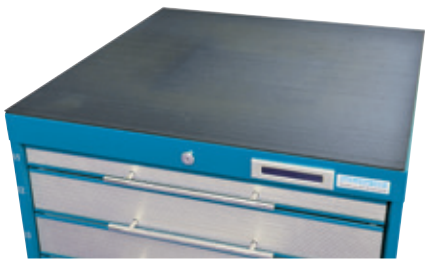
+



Trough divider

>>

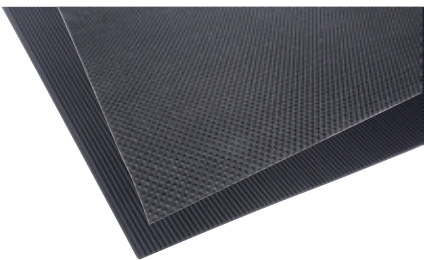




Corrugated rubber mat for top of cabinet

- Oil-proof
- Customised to external housing dimensions

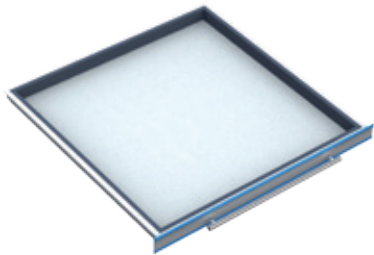
Item no.	Module width
TS-7-60	600



Inserts for drawer

- Customised to internal drawer dimension

Item no.	Designs
TS-7-80	Non-slip mat
TS-7-70	Corrugated rubber



Spacer bars for drawer width 600

- For balancing and fixing trough plates and small parts boxes in the drawers, VE = 4 pcs.

Item no.	FH	Subdivisions
TS-7-01-D050	50	TP
TS-7-10-D050	50	SPB
TS-7-10-D100	100	SPB



Trough plates

- With 2 troughs 70 mm

Item no.	Dimensions in mm (WxDxH)
50.002.070	150 x 150 x 30



Trough plates

- With 3 troughs 46 mm

Item no.	Dimensions in mm (WxDxH)
50.003.046	150 x 150 x 30



Trough plates

- With 4 troughs 34 mm

Item no.	Dimensions in mm (WxDxH)
50.004.034	150 x 150 x 30



Trough dividers

- For trough plate with 2 troughs

Item no.	Width in mm
51.002.070	70



Trough dividers

- For trough plate with 3 troughs

Item no.	Width in mm
51.003.046	46

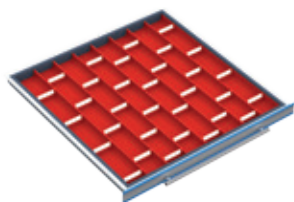


Trough dividers

- For trough plate with 4 troughs

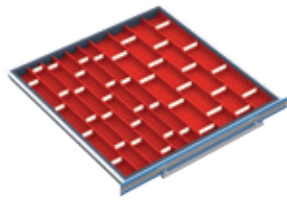
Item no.	Width in mm
51.004.034	34

Customisations for internal drawer dimension 600 x 600 mm

**Trough plates**

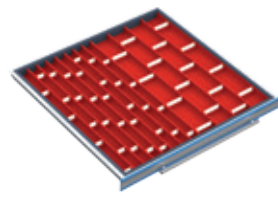
- 16 x TP with 2 troughs
- 32 x dividers

Item no.	FH
TS-7-01	50

**Trough plates**

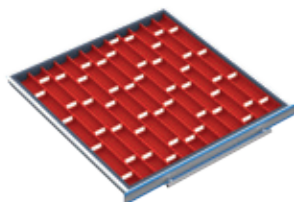
- 8 x TP with 2 troughs + 16 x DIV
- 8 x TP with 3 troughs + 24 x DIV

Item no.	FH
TS-7-02	50

**Trough plates**

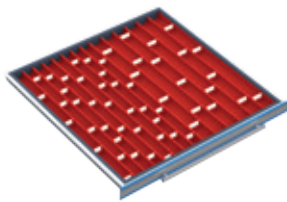
- 8 x TP with 2 troughs + 16 x DIV
- 8 x TP with 4 troughs + 32 x DIV

Item no.	FH
TS-7-03	50

**Trough plates**

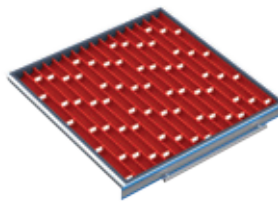
- 16 x TP with 3 troughs
- 48 x dividers

Item no.	FH
TS-7-04	50

**Trough plates**

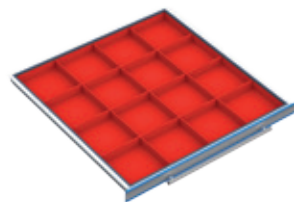
- 8 x TP with 3 troughs + 18 x DIV
- 8 x TP with 4 troughs + 36 x DIV

Item no.	FH
TS-7-05	50

**Trough plates**

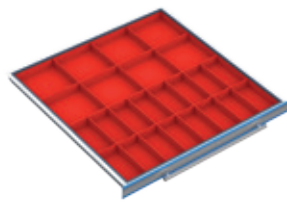
- 16 x TP with 4 troughs
- 64 x dividers

Item no.	FH
TS-7-06	50

**Plastic small parts boxes**

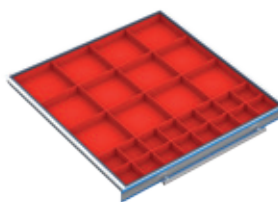
- 16 x SPB 150 x 150 mm

Item no.	FH
TS-7-10-050	50
TS-7-10-100	100

**Plastic small parts boxes**

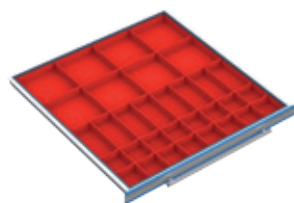
- 16 x SPB 75 x 150 mm
- 8 x SPB 150 x 150 mm

Item no.	FH
TS-7-11-050	50
TS-7-11-100	100

**Plastic small parts boxes**

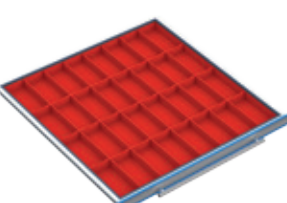
- 16 x SPB 75 x 75 mm
- 12 x SPB 150 x 150 mm

Item no.	FH
TS-7-12-050	50
TS-7-12-100	100

**Plastic small parts boxes**

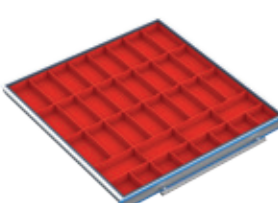
- 16 x SPB 75 x 75 mm
- 8 x SPB 75 x 150 mm
- 8 x SPB 150 x 150 mm

Item no.	FH
TS-7-13-050	50
TS-7-13-100	100

**Plastic small parts boxes**

- 32 x SPB 75 x 150 mm

Item no.	FH
TS-7-14-050	50
TS-7-14-100	100

**Plastic small parts boxes**

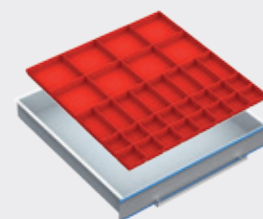
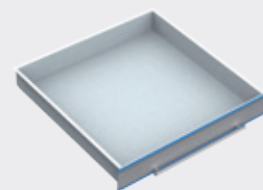
- 8 x SPB 75 x 75 mm
- 28 x SPB 75 x 150 mm

Item no.	FH
TS-7-15-050	50
TS-7-15-100	100

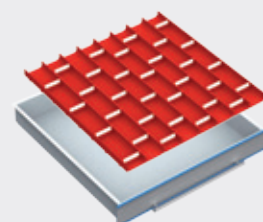
The drawer inserts are made from high-grade plastic and can be inserted into the drawer using the modular principle.

The trough plates and small parts boxes can be inserted lengthwise and widthwise.

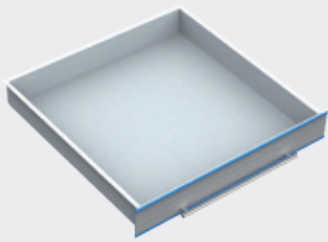
- Basic dimensions TP: 150 x 150 mm
- Height SPB FH 50: 28 mm
- Height SPB FH 100: 65 mm
- Incl. spacer bars



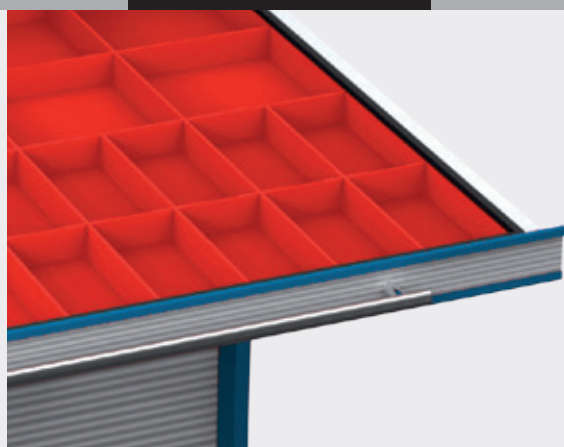
or:



Grid:	R 6-24	R 12-24	R 18-24	R 24-24
-------	--------	---------	---------	---------



Drawer



Small parts box



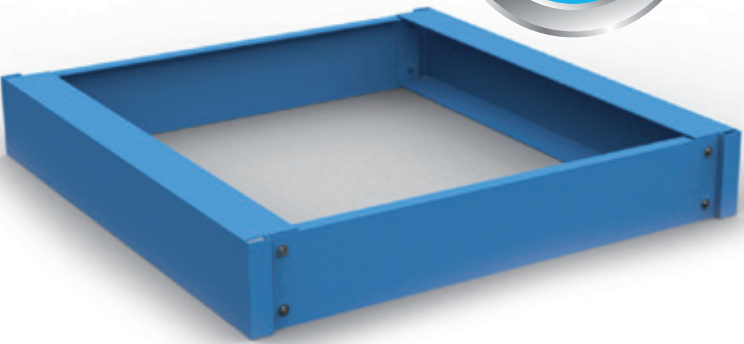
Small parts boxes
■ for front height 50 mm

Item no.	Dimensions in mm (WxDxH)
53.075.075.30	75 x 75 x 28
53.150.075.30	75 x 150 x 28
53.150.150.30	150 x 150 x 28



Small parts boxes
■ for front height 50 mm

Item no.	Dimensions in mm (WxDxH)
53.075.075.65	75 x 75 x 65
53.150.075.65	75 x 150 x 65
53.150.150.65	150 x 150 x 65

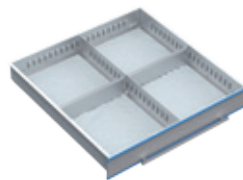


Lift truck plinth for TSM® 600

Item no.	Dimensions in mm (WxDxH)
09.SOC700	700 x 725 x 112

Metal dividers

- Scope of delivery without drawers
- For internal drawer dimension 600 x 600 mm
- Complete sets for inserting into the drawers
- Metal dividers consisting of side and centre compartment rails as well as divider plates
- The compartment rails are made from high-grade, galvanised sheet metal, the divider plates from aluminium
- Various compartment sizes from a front height of 75 mm
- The individual parts needed for a customised layout of the drawers are listed on page 56



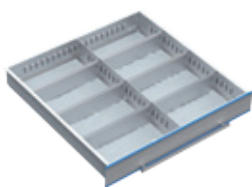
- 4 compartments 300 x 300 mm

Item no.	FH
TS-7-20-075	75
TS-7-20-100	100
TS-7-20-150	150
TS-7-20-200	200



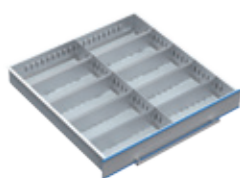
- 6 compartments 300 x 200 mm

Item no.	FH
TS-7-21-075	75
TS-7-21-100	100
TS-7-21-150	150
TS-7-21-200	200



- 8 compartments 300 x 150 mm

Item no.	FH
TS-7-22-075	75
TS-7-22-100	100
TS-7-22-150	150
TS-7-22-200	200



- 2 compartments 300 x 100 mm
- 8 compartments 300 x 125 mm

Item no.	FH
TS-7-23-075	75
TS-7-23-100	100
TS-7-23-150	150
TS-7-23-200	200



- 12 compartments 300 x 100 mm

Item no.	FH
TS-7-24-075	75
TS-7-24-100	100
TS-7-24-150	150
TS-7-24-200	200



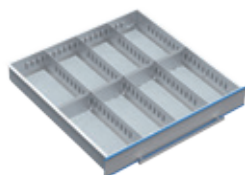
- 12 compartments 300 x 75 mm
- 2 compartments 300 x 150 mm

Item no.	FH
TS-7-29-075	75
TS-7-29-100	100
TS-7-29-150	150
TS-7-29-200	200



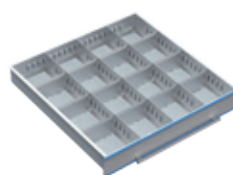
- 16 compartments 300 x 75 mm

Item no.	FH
TS-7-30-075	75
TS-7-30-100	100
TS-7-30-150	150
TS-7-30-200	200



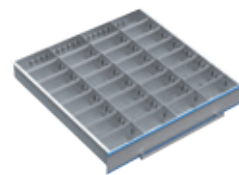
- 8 compartments 150 x 300 mm

Item no.	FH
TS-7-31-075	75
TS-7-31-100	100
TS-7-31-150	150
TS-7-31-200	200



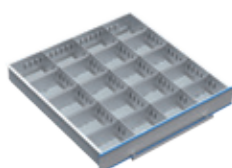
- 16 compartments 150 x 150 mm

Item no.	FH
TS-7-26-075	75
TS-7-26-100	100
TS-7-26-150	150
TS-7-26-200	200



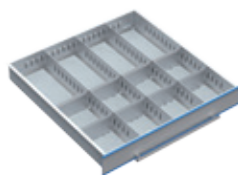
- 32 compartments 150 x 75 mm

Item no.	FH
TS-7-27-075	75
TS-7-27-100	100
TS-7-27-150	150
TS-7-27-200	200



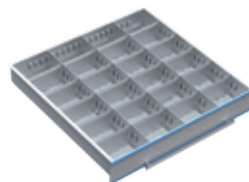
- 4 compartments 150 x 100 mm
- 16 compartments 150 x 125 mm

Item no.	FH
TS-7-25-075	75
TS-7-25-100	100
TS-7-25-150	150
TS-7-25-200	200



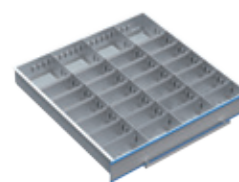
- 8 compartments 150 x 150 mm
- 4 compartments 150 x 300 mm

Item no.	FH
TS-7-32-075	75
TS-7-32-100	100
TS-7-32-150	150
TS-7-32-200	200



- 24 compartments 150 x 100 mm

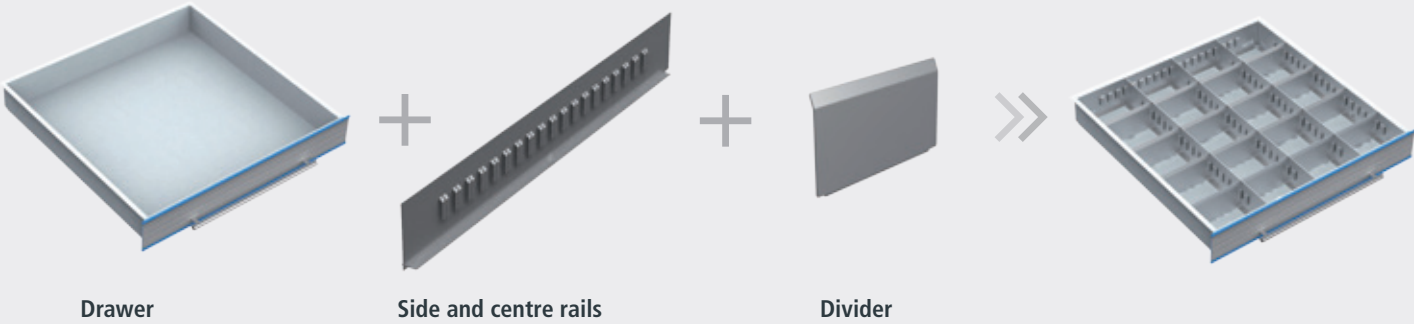
Item no.	FH
TS-7-35-075	75
TS-7-35-100	100
TS-7-35-150	150
TS-7-35-200	200



- 24 compartments 150 x 75 mm
- 4 compartments 150 x 150 mm

Item no.	FH
TS-7-36-075	75
TS-7-36-100	100
TS-7-36-150	150
TS-7-36-200	200

Grid:	R 6-24	R 12-24	R 18-24	R 24-24
-------	--------	---------	---------	---------



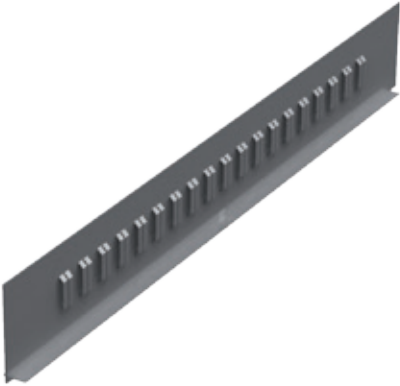
Side and centre rails



Side compartment rail for drawer width and drawer depth

- Made from high-quality galvanised sheet metal
- The side compartment rails are hung inside the drawer body
- Supplied in pairs

Item no.	Drawer depth in mm	Front height in mm
TS-7-S100	600	100
TS-7-S150	600	150
TS-7-S200	600	200



Centre compartment rails

- For lengthwise subdivision of the drawers
- Made from high-quality galvanised sheet metal

Item no.	Drawer depth in mm	Front height in mm
TS-7-M100	600	100
TS-7-M150	600	150
TS-7-M200	600	200

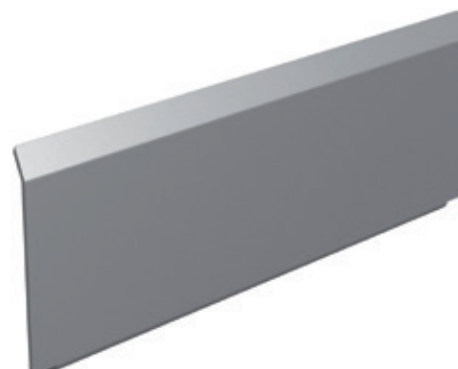
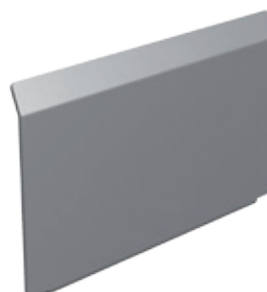
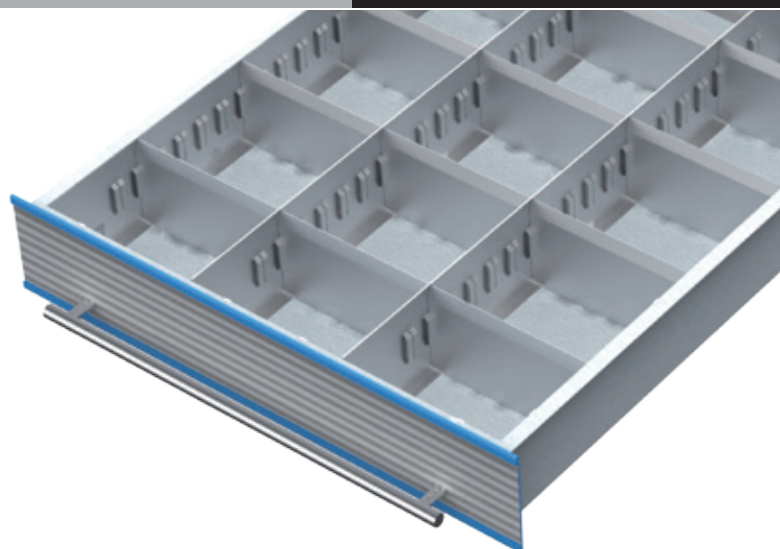
Dividers

- For lateral division of the drawers
- Made from aluminium
- The lightweight metal dividers can be pushed into the slots on the side and centre rails and labelled

Item no.	Divider width in mm	Front height in mm
TS-30050100	50	100
TS-30075100	75	100
TS-30100100	100	100
TS-30125100	125	100
TS-30150100	150	100
TS-30175100	175	100
TS-30200100	200	100
TS-30225100	225	100
TS-30250100	250	100
TS-30275100	275	100
TS-30300100	300	100

Item no.	Divider width in mm	Front height in mm
TS-30050150	50	150
TS-30075150	75	150
TS-30100150	100	150
TS-30125150	125	150
TS-30150150	150	150
TS-30175150	175	150
TS-30200150	200	150
TS-30225150	225	150
TS-30250150	250	150
TS-30275150	275	150
TS-30300150	300	150

Item no.	Divider width in mm	Front height in mm
TS-30050200	50	200
TS-30075200	75	200
TS-30100200	100	200
TS-30125200	125	200
TS-30150200	150	200
TS-30175200	175	200
TS-30200200	200	200
TS-30225200	225	200
TS-30250200	250	200
TS-30275200	275	200
TS-30300200	300	200



Complete solutions

- Drawer cabinets including storage & administration software
- Basic module: with touch screen display
- Extension module: without touch screen display
- Offers complete with drawers
- Full pull-out
- For individually controllable cover divisions, see pages 50 and 54



- 6 drawers:
2x 100, 2x 150, 2x 200 mm

Item no.	Module	External dimensions (WxDxH) in mm
TS5G00500060	Basic	550 x 725 x 1,019
TS5A00500060	Extension	550 x 725 x 1,019
TS5G00700060	Basic	700 x 725 x 1,019
TS5A00700060	Extension	700 x 725 x 1,019

- 6 drawers:
1x 100, 4x 150, 1x 200 mm



Item no.	Module	External dimensions (WxDxH) in mm
TS5G00500061	Basic	550 x 725 x 1,019
TS5A00500061	Extension	550 x 725 x 1,019
TS5G00700061	Basic	700 x 725 x 1,019
TS5A00700061	Extension	700 x 725 x 1,019

- 7 drawers:
2x 50, 1x 100, 2x 150, 2x 200 mm



Item no.	Module	External dimensions (WxDxH) in mm
TS5G00500070	Basic	550 x 725 x 1,019
TS5A00500070	Extension	550 x 725 x 1,019
TS5G00700070	Basic	700 x 725 x 1,019
TS5A00700070	Extension	700 x 725 x 1,019

- 7 drawers:
1x 50, 2x 100, 3x 150, 1x 200 mm



Item no.	Module	External dimensions (WxDxH) in mm
TS5G00500071	Basic	550 x 725 x 1,019
TS5A00500071	Extension	550 x 725 x 1,019
TS5G00700071	Basic	700 x 725 x 1,019
TS5A00700071	Extension	700 x 725 x 1,019

- 8 drawers
2x 50, 3x 100, 2x 150, 1x 200 mm



Item no.	Module	External dimensions (WxDxH) in mm
TS5G00500080	Basic	550 x 725 x 1,019
TS5A00500080	Extension	550 x 725 x 1,019
TS5G00700080	Basic	700 x 725 x 1,019
TS5A00700080	Extension	700 x 725 x 1,019

- 9 drawers:
9 x 100 mm



Item no.	Module	External dimensions (WxDxH) in mm
TS5G00500090	Basic	550 x 725 x 1,019
TS5A00500090	Extension	550 x 725 x 1,019
TS5G00700090	Basic	700 x 725 x 1,019
TS5A00700090	Extension	700 x 725 x 1,019

- Controlled via **storage & administration software**
- TSS® modules linkage variants
- Drawers with full pull-out
- Incl. software licence
- **All modules including lift truck plinth in the housing colours**



- 1x basic module TSM® 450/600
- 1x extension module TSM® 450/600
- Controlled via storage & administration software
- Drawer arrangement per 5-module TSS®:
1x 50, 2x 100, 3x 150, 1x 200 mm

Item no.	Module width in mm
TS5-GA500-1	550
TS5-GA700-1	700



- 1x basic module TSM® 450/600
- 1x extension module TSM® 450/600
- Controlled via storage & administration software
- Drawer arrangement per 5-module TSS®:
18 x 50 mm

Item no.	Module width in mm
TS5-GA500-2	550
TS5-GA700-2	700



- 1x basic module TSM® 450/600
- 2x extension module TSM® 450/600
- Controlled via storage & administration software
- Drawer arrangement per 5-module TSS®:
1x 50, 2x 100, 3x 150, 1x 200 mm

Item no.	Module width in mm
TS5-GA500-3	550
TS5-GA700-3	700



- 1x basic module TSM® 450/600
- 3x extension module TSM® 450/600
- Controlled via storage & administration software
- Drawer arrangement per 5-module TSS®:
1x 50, 2x 100, 3x 150, 1x 200 mm

Item no.	Module width in mm
TS5-GA500-4	550
TS5-GA700-4	700

Linkage variants

TSM® combinations

- Controlled via **storage & administration software**
- TSS® modules linkage variants with TSM® modules
- Drawers with full pull-out
- **All modules including lift truck plinth in the housing colours**



- 1x basic module TSM® 600
- 1x extension module TSM® 600
- 2x extension module TSM® 300
- Controlled via storage & administration software
- Drawer arrangement per 5-module TSS®: 4x 100, 2x 150, 1x 200 mm
- Drawer arrangement per module: 1x 50, 9x 100, 5x 150 mm

Item no.

TS5-TSM-01



- 1x basic module TSM® 150
- 2x extension module TSM® 150
- 2x extension module TSM® 600
- Controlled via storage & administration software
- Drawer arrangement per TSM® module: 8x 50, 7x 100, 4x 150 mm
- Drawer arrangement per module: 1x 50, 2x 100, 3x 150, 1x 200 mm

Item no.

TS5-TSM-02



- 1x basic module TSM® 300
- 1x extension module TSM® 150
- 2x extension module TSM® 600
- Controlled via storage & administration software
- Drawer arrangement per TSM® module: 5x 50, 10x 100, 3x 150 mm
- Drawer arrangement per module: 6x 50, 3x 100, 2x 150 mm

Item no.

TS5-TSM-03



- 1x basic module TSM® 600
- 1x extension module TSM® 600
- 3x extension module TSM® 150
- Controlled via storage & administration software
- Drawer arrangement per 5-module TSS®: 18 x 50 mm
- Drawer arrangement per module: 34 x 50 mm

Item no.

TS5-TSM-04

Tool-Server-System

Linkage variants

Tool-Server-System

- A modular, combinable and expandable system like no other
- The TSS® series is unrivalled in terms of its flexibility, functionality, efficient use of space and also offers countless variation possibilities
- This new generation of drawer cabinets offers various types of locking mechanism



TSS®1

Mechanical locking with key and cylinder lock

- Individual locking, all locking or with main locking system
- All drawers are unlocked simultaneously, although only one drawer can be opened at a time to prevent the cabinet from tipping over



TSS®2

Electromechanically by wireless technology with rotary knob and transponder technology

- Contactless opening or locking of the cabinets at the press of a button by means of wireless transmission
- All drawers are unlocked simultaneously, although here as well, only one drawer can be opened at a time
- Freely programmable
- Simple modification or retrofitting
- Battery operation means no mains connection is necessary
- Low battery warning
- Wireless radius of up to 30 cm
- Optionally also with software and individually assigned access restrictions
- Battery life: 1,000,000 operations
- Up to 48,000 locking actions



TSS®3

Storage administration software

- For the storage administration of non-electronic tool cabinets
- Software functions such as TSM®-Software incl. minimum stock monitoring without the control of an electronic dispensing system
- 15" touch monitor, PC with Windows 7 HP 64bit and software pack
- PC housing for mounting on a tool cabinet



TSS®4

External control through connection to third-party software

- The Tool-Server-System can be connected to existing administration programs through an interface
- Modules, drawers and cover dividers can also be allocated to individual operators here

GENERAL CONDITIONS OF PAYMENT AND DELIVERY OF BEDRUNKA & HIRTH GMBH BRÄUNLINGEN

1. Scope of validity

1.1 The following terms and conditions are applicable to all our offers, sales, deliveries and services and shall form part of the contract unless a separate contractual agreement is concluded in writing. They shall not apply if our contract partner is a private individual and does not act in a professional or commercial capacity. They shall also apply to all future business relationships, even if they are not expressly agreed as being applicable to future orders.

1.2 We hereby expressly reject any and all deviating or supplemental General Terms and Conditions of the Buyer. These shall also not apply if the Buyer has based his order or other declaration upon them or has rejected the applicability of our General Terms and Conditions.

2. Offers and conclusion of contract

2.1 Our offers are non-binding and may therefore be revoked by us prior to delivery for acceptance by the customer and for 2 working days thereafter, unless they have been described as binding in writing. An effective contract therefore comes into existence only through our order confirmation or the despatch of the goods.

2.2 Dimensions, weights, illustrations, drawings and other documents belonging to our non-binding offers shall remain our property and are indicative only. They shall become a binding part of the contract only with our express written confirmation.

3. Doubtful creditworthiness

3.1 If, after concluding the contract, we become aware of circumstances that cause us to have doubts about the Buyer's ability to pay, we may make further deliveries contingent upon the Buyer making advance payment for the goods. We can require the Buyer to make advance payment within an appropriate period and withdraw from the contract if the advance payment is not paid on time; the Buyer can furnish us with collateral in the form of a bank guarantee instead of the advance payment. If we have already delivered the goods, the purchase price shall immediately become due for payment in full, regardless of any agreed payment deadlines.

3.2 Reasons for doubting the Buyer's ability to pay include the initiation of insolvency proceedings over the Buyer's assets or the failure to make payments to us or third parties on time.

4. Prices

4.1 All prices are net, ex works, without packaging, unless agreed otherwise. The prices applicable on the day of delivery shall always apply. In the case of fixed-price arrangements, we are also entitled to bill proportionately for any increase in the price of materials, salary increases and the like. The prevailing rate of statutory VAT shall be added to all prices.

4.2 Unless agreed otherwise in the offer or order confirmation, packaging shall be charged for separately.

4.3 Shipping / transfer of risk

All risks shall transfer to the Buyer upon handover to the haulier and not later than when the goods leave the factory or warehouse. We are at liberty to choose the shipping method.

4.4 Goods reported as available for despatch on the agreed date must be collected without delay, failing which, we are entitled to store the goods at our own discretion at the Buyer's expense and risk and to charge for them as delivered ex works or ex warehouse. The same shall apply if shipping cannot take place due to traffic stoppages or other circumstances beyond our control.

4.5 Statutory value added tax is not included in our prices and the rate applicable on the billing date shall be indicated separately on the invoice.

4.6 If a delivery within the internal market of the EC was treated as tax-free within the scope of the intra-community supply of goods, even though the prerequisites for this were not met, the delivery shall nevertheless be deemed tax-free if the utilisation of the tax exemption is based on the incorrect information provided by the Buyer and we were unable to identify the incorrect nature of this information,

even with the due care of a prudent merchant. In this case, the Buyer shall owe the unpaid tax.

4.7 If more than 4 months pass between the date on which the contract is concluded and the date of delivery, without this being due to a delay in delivery for which Bedrunka + Hirth is responsible, and if our applicable price list has changed during this time, we may demand the list price applicable on the date of delivery instead of the agreed purchase price. We will send the Buyer an appropriately amended order confirmation prior to delivery. In this case, the Buyer may withdraw from its order in respect of the goods for which the price has been increased. The Buyer must declare its intention to withdraw by not later than on the fifth day after receiving the amended order confirmation. This declaration may be sent by fax or email.

5. Delivery time

5.1 All indicated delivery dates are non-binding and are agreed as indicative only, unless we have expressly described them as binding. For non-binding delivery dates, a delivery within 14 days of the indicated delivery date shall in any event still be deemed to be a timely delivery.

5.2 If we are unable to adhere to an expressly agreed deadline or fall behind for other reasons for which we are responsible, the Buyer shall grant us an appropriate grace period. If this grace period expires without success, the Buyer shall be entitled to withdraw from the contract.

5.3 If performance becomes temporarily impossible or considerably more difficult for us, whether in full or in part, due to force majeure or for other extraordinary circumstances beyond our control, the agreed delivery time shall be extended by the duration of the obstacle to performance. The same applies to a deadline for the rendering of service set by the law or by the Buyer, in particular for grace periods set in the event of default.

5.4 Prior to the expiry of the delivery time or the performance deadline extended in accordance with para. 3, the Buyer shall not be entitled to withdraw nor to receive compensation. If the obstacle to performance lasts longer than 3 months, both the Buyer and we shall be entitled to withdraw from the contract if the contract has not yet been executed. If the Buyer is entitled to withdraw from the contract in accordance with the contract or the law (e.g. due to a lack of interest) without setting a grace period, this right shall remain unaffected.

5.5 In the event of a delay in delivery that is not based on intent or gross negligence, claims for compensation of all kinds shall be precluded.

6. Shipping and transport risk

6.1 In principle, risk transfers to the Buyer when the goods are loaded for transport. If the goods are lost or damaged when transported on our vehicles or the vehicles of our contract hauliers and neither we nor the recipient are responsible for such loss or damage, we are nevertheless prepared to cover the loss if the recipient provides a damage report on the delivery note or waybill without delay, indicating the nature and extent of the transport damage found and the reasons for its occurrence, and signed by the haulier by way of confirmation.

6.2 Unless otherwise expressly agreed in writing, we are authorised to make partial deliveries to a reasonable extent.

6.3 We will charge EUR 7.50 for each notification of delivery requested by the customer that is made by telephone, fax or email

7. Terms of payment

7.1 Our invoices are payable within 10 days from the invoice date with a 2% discount or within 30 days in full.

7.2 The Buyer shall be in default, without any warning by ourselves, if it does not pay the purchase price within 30 days of becoming due and receipt of the invoice or an equivalent demand for payment.

7.3 If the Buyer is late making a payment, all of its payment obligations arising from the business relationship with us shall immediately become due. In this case, we are entitled to demand interest in the legally established amount with effect from the relevant moment. The Vendor reserves the right to provide proof of further

damage.

7.4 The Buyer is entitled to set-off, even if complaints or counterclaims are asserted, only if the counterclaims have been legally established, acknowledged by the Vendor or are not in dispute. The Buyer is authorised to exercise its right of retention if its counterclaim is based on the same purchase agreement.

8. Liability

8.1 Information about the properties of goods, as well as references to technical standards in catalogues or other advertising media and our price lists, are for descriptive purposes only and do not form the basis for any guarantee of quality without explicit reference in the order confirmation or in the contract.

8.2 We are not obliged to provide any warranty if the Buyer has not immediately complained about an apparent fault in writing. In the case of hidden faults, which could not be discovered even with careful execution of the obligations of the customer pursuant to Art. 377 German Commercial Code, the complaint shall be raised immediately after the fault has been found. If the product has a fault for which we are responsible and the Buyer complains about it promptly in writing, we will undertake to rectify the fault - to the exclusion of the right of the Buyer to withdraw from the contract or to reduce the purchase price - unless we are entitled to refuse rectification on the basis of a statutory regulation. For each individual fault, the Buyer shall grant us an appropriate period of time in which to effect rectification.

8.3 Rectification can take the form of the elimination of the fault or the delivery of a new product, at the Buyer's option. We are entitled to reject the method of rectification chosen by the Buyer if it is associated with disproportionately high costs. During rectification, a reduction in the purchase price or withdrawal from the contract by the Buyer are precluded. Rectification is deemed to have failed after the second unsuccessful attempt. If rectification has failed or the Vendor has rejected the rectification overall, the Buyer can demand a lowering of the purchase price (reduction) or declare its withdrawal from the contract, at its option.

8.4 The Buyer can only bring claims to compensation under the following conditions because of the fault if the rectification failed or we refused to carry out rectification. The right of the Buyer to bring further claims for compensation under the following conditions remains unaffected.

8.5 In accordance with statutory provisions, we are liable without restriction for intentional or grossly negligent breaches of duty as well as for damage caused by an injury to life, limb or health. Moreover, we shall only be liable if the breached contractual obligation is of material importance for achieving the purpose of the contract and only up to the amount of the typically foreseeable loss.

8.6 The limitation of liability in accordance with para. 5 applies accordingly to other than contractual claims for compensation, in particular claims arising from tortious liability, with the exception of claims in accordance with the German Product Liability Act. It further also applies to the benefit of our executives, employees, workers, representatives and vicarious agents.

8.7 If we have issued a guarantee or quality and/or shelf life in respect of the goods or parts thereof, we shall also be liable within the scope of this guarantee. However, we shall only be liable for damage that is based on the absence of the guaranteed quality or shelf life but does not occur directly on the goods, if the risk of such damage is apparent from the guarantee of quality and shelf life.

8.8 Any further liability is precluded without consideration of the legal nature of the claim brought. Insofar as the Vendor's liability is precluded or limited, this also applies to the personal liability of his executives, employees, workers, representatives and vicarious agents.

8.9 All claims for defects expire 24 months after the transfer or risk, unless any longer periods are mandatorily prescribed pursuant to Articles 438 I (2), 479 I and 634a I (2) German Federal Civil Code.

9. Retention of title

9.1 We shall retain possession of the goods (goods subject to retention of title) until all payments due under the purchase agreement have been received. The delivered goods shall pass into the possession of the Buyer only when the Buyer

has fulfilled all of its liabilities under the business relationship, including subsidiary claims, claims for compensation and redemptions of cheques and bills of exchange. In the case of the cheque/bills of exchange procedure, the retention of title in all of its forms listed here shall expire not with the payment by cheque but only with the redemption of the bill of exchange.

9.2 The Buyer shall notify us in writing without delay of all third-party interventions, in particular of enforcement measures and other impairments of its property. The Buyer shall make good all damage and costs we incur, which arise through a breach of this obligation and through necessary measures to protect against third-party interventions.

9.3 If the Buyer does not comply with its obligation to make payment, despite our reminder, we can, without prior notice, demand that the Buyer release the goods that are still in its possession and subject to the retention of title. The Buyer shall bear the transport costs associated with this. The attachment of the matter subject to the retention of title by us always includes a withdrawal from the contract. We are entitled to dispose of the goods subject to the retention of title following their retention. The proceeds of disposal shall be offset against our outstanding claims.

10. Place of fulfilment

The place of fulfilment for payments is Bräunlingen, for our deliveries of goods the place of shipping.

11. Data processing

The Buyer agrees that we may process the data about the Buyer received in connection with the business relationship in accordance with the Federal Data Protection Act for the fulfilment of our business purposes, in particular to store them or transmit them to a credit reference agency, where this is done within the scope of the identified purpose of the contract or required for the preservation of our legitimate interests, and there is no reason to assume that the legitimate interests of the Buyer outweigh the preclusion of the processing of these data, in particular their transmission.

12. Severability clause

Amendments or additions to the contract or these General Terms and Conditions must be made in writing in order to obtain effectiveness. Should a provision of these General Conditions of Delivery and Payment be or become ineffective or unenforceable, this shall not affect the effectiveness of the remaining General Conditions of Delivery and Payment.

13. Jurisdiction and applicable law

13.1 The contractual relationship between the Buyer and ourselves is governed exclusively by the law of the Federal Republic of Germany, even if the Buyer has its place of residence or business abroad. Application of the Uniform Law on the International Purchase of Goods and the Uniform Law on the Formation of Contracts for the International Sale of Goods is precluded.

13.2 The Buyer is not authorised to cede claims arising from the purchase agreement without the permission of the Vendor.

13.3 If the Buyer is a merchant legal entity under public law or a special fund under public law, the place of jurisdiction for both parties - including for complaints regarding cheques and bills of exchange - is Donaueschingen, Germany. We are, however, also entitled to sue the Buyer at its general place of jurisdiction.

Contents by item numbers

Item no.	Page	Item no.	Page	Item no.	Page	Item no.	Page	Item no.	Page
50.002.070	29	09.T15K10010	45	09.T30K10015	34	53.150.150.65	28	TS-30275100	63
50.002.070	37	09.T15K10010	55	09.T30K10015	56	53.150.150.65	36	TS-30275150	51
50.002.070	46	09.T15K10015	26	09.T30K20005	34	53.150.150.65	48	TS-30275150	63
50.002.070	58	09.T15K10015	32	09.T30K20005	56	53.150.150.65	60	TS-30275200	51
50.003.046	29	09.T15K10015	45	09.T30K20010	34	EK-5873	35	TS-30275200	63
50.003.046	37	09.T15K10015	55	09.T30K20010	56	EK-5873	57	TS-30300100	51
50.003.046	46	09.T15K20005	26	09.T30K20015	34	EK-5874	35	TS-30300100	63
50.003.046	58	09.T15K20005	32	09.T30K20015	56	EK-5874	57	TS-30300150	51
50.004.034	29	09.T15K20005	45	09.T30K30005	34	EK-6163	14	TS-30300150	63
50.004.034	37	09.T15K20005	55	09.T30K30005	56	EK-6163	18	TS-30300200	51
50.004.034	46	09.T15K20010	26	09.T30K30010	34	EK-6164	14	TS-30300200	63
50.004.034	58	09.T15K20010	32	09.T30K30010	56	EK-6195	14	TS-5-01	47
51.002.070	29	09.T15K20010	45	09.T30K30015	34	EK-6303	14	TS-5-01-D050	46
51.002.070	37	09.T15K20010	55	09.T30K30015	56	TS-30050100	51	TS-5-02	47
51.002.070	46	09.T15K20015	26	09.T30KB050	34	TS-30050100	63	TS-5-03	47
51.002.070	58	09.T15K20015	32	09.T30KB100	34	TS-30050150	51	TS-5-04	47
51.003.046	29	09.T15K20015	45	09.T30KB150	34	TS-30050150	63	TS-5-05	47
51.003.046	37	09.T15K20015	55	09.T30KB20100	32	TS-30050200	51	TS-5-06	47
51.003.046	46	09.T15K30005	26	09.T30KB20150	32	TS-30050200	63	TS-5-10-050	47
51.003.046	58	09.T15K30005	32	09.T30KB2050	32	TS-30075100	51	TS-5-10-100	47
51.004.034	29	09.T15K30005	45	09.T30KB2050	56	TS-30075100	63	TS-5-10-D050	46
51.004.034	37	09.T15K30005	55	09.T30KB2100	56	TS-30075150	51	TS-5-10-D100	46
51.004.034	46	09.T15K30010	26	09.T30KB2150	56	TS-30075150	63	TS-5-11-050	47
51.004.034	58	09.T15K30010	32	09.T30KB4050	33	TS-30075200	51	TS-5-11-100	47
09.ETK.89.28	35	09.T15K30010	45	09.T3X15.102	39	TS-30075200	63	TS-5-12-050	47
09.ETK.89.28	57	09.T15K30010	55	09.T45KB6050	45	TS-30100100	51	TS-5-12-100	47
09.ETKD.LAN	57	09.T15K30015	26	09.T60KB8050	55	TS-30100100	63	TS-5-13-050	47
09.ETKD.LAN	35	09.T15K30015	32	09.T75K10005	27	TS-30100150	51	TS-5-13-100	47
09.SOC150	27	09.T15K30015	45	09.T75K10005	33	TS-30100150	63	TS-5-14-050	47
09.SOC300	33	09.T15K30015	55	09.T75K10005	45	TS-30100200	51	TS-5-14-100	47
09.SOC550	48	09.T15KB050	26	09.T75K10005	55	TS-30100200	63	TS-5-15-050	47
09.SOC700	60	09.T15KB100	26	09.T75K15005	27	TS-30125100	51	TS-5-15-100	47
09.SPA04W105	17	09.T15KB150	26	09.T75K15005	33	TS-30125100	63	TS-5-16-050	47
09.SPA06W085	17	09.T15KB2050	27	09.T75K15005	45	TS-30125150	51	TS-5-16-100	47
09.SPA07W072	17	09.T30.050	32	09.T75K15005	55	TS-30125150	63	TS-5-20-100	49
09.SPA08W060	17	09.T30.050	33	09.T75K20005	27	TS-30125200	51	TS-5-20-150	49
09.SPA09W050	17	09.T30.050	34	09.T75K20005	33	TS-30125200	63	TS-5-20-200	49
09.SPA1000AS	18	09.T30.050	36	09.T75K20005	45	TS-30150100	51	TS-5-21-100	49
09.SPA1000GS	18	09.T30.050	37	09.T75K20005	55	TS-30150100	63	TS-5-21-150	49
09.SPA1020WF	18	09.T30.100	32	09.T75K30005	27	TS-30150150	51	TS-5-21-200	49
09.SPA1040WF	18	09.T30.100	34	09.T75K30005	33	TS-30150150	63	TS-5-22-100	49
09.SPA11W039	17	09.T30.100	36	09.T75K30005	45	TS-30150200	51	TS-5-22-150	49
09.SPA13W034	17	09.T30.100	37	09.T75K30005	55	TS-30150200	63	TS-5-22-200	49
09.SPA15W027	17	09.T30.150	32	09.T75K60005	27	TS-30175100	51	TS-5-23-100	49
09.SPA18W022	17	09.T30.150	34	09.T75K60005	33	TS-30175100	63	TS-5-23-150	49
09.SPA21W019	17	09.T30.150	36	09.T75K60005	45	TS-30175150	51	TS-5-23-200	49
09.T15.050	26	09.T30.150	37	09.T75K60005	55	TS-30175150	63	TS-5-24-100	49
09.T15.050	27	09.T300A	31	53.075.075.30	28	TS-30175200	51	TS-5-24-150	49
09.T15.050	28	09.T300G	31	53.075.075.30	36	TS-30175200	63	TS-5-24-200	49
09.T15.050	29	09.T30100150	28	53.075.075.30	48	TS-30200100	51	TS-5-25-100	49
09.T15.100	26	09.T30100300	36	53.075.075.30	60	TS-30200100	63	TS-5-25-150	49
09.T15.100	28	09.T3015.24	39	53.075.075.65	28	TS-30200150	51	TS-5-25-200	49
09.T15.100	29	09.T30150150	28	53.075.075.65	36	TS-30200150	63	TS-5-26-100	49
09.T15.150	26	09.T30150300	36	53.075.075.65	48	TS-30200200	51	TS-5-26-150	49
09.T15.150	28	09.T3050150	28	53.075.075.65	60	TS-30200200	63	TS-5-26-200	49
09.T15.150	29	09.T3050300	36	53.150.075.30	28	TS-30225100	51	TS-5-27-100	49
09.T150A	25	09.T30A34	31	53.150.075.30	36	TS-30225100	63	TS-5-27-150	49
09.T150G	25	09.T30F200	38	53.150.075.30	48	TS-30225150	51	TS-5-27-200	49
09.T150G34	25	09.T30F300	38	53.150.075.30	60	TS-30225150	63	TS-5-28-100	49
09.T1530.46	39	09.T30F400	38	53.150.075.65	28	TS-30225200	51	TS-5-28-150	49
09.T15A34	25	09.T30F500	38	53.150.075.65	36	TS-30225200	63	TS-5-28-200	49
09.T15K10005	26	09.T30F600	38	53.150.075.65	48	TS-30250100	51	TS-5-29-100	49
09.T15K10005	32	09.T30G34	31	53.150.075.65	60	TS-30250100	63	TS-5-29-150	49
09.T15K10005	45	09.T30K10005	34	53.150.150.30	28	TS-30250150	51	TS-5-29-200	49
09.T15K10005	55	09.T30K10005	56	53.150.150.30	36	TS-30250150	63	TS-5-30-100	49
09.T15K10010	26	09.T30K10010	34	53.150.150.30	48	TS-30250200	51	TS-5-30-150	49
09.T15K10010	32	09.T30K10010	56	53.150.150.30	60	TS-30250200	63	TS-5-30-200	49
						TS-30275100	51	TS-5-31-100	49

Item no.	Page	Item no.	Page	Item no.	Page	Notes
TS-5-31-150	49	TS-7-22-100	61	TS-7K121-150	54	
TS-5-31-200	49	TS-7-22-150	61	TS-7K160-050	54	
TS-5-32-100	49	TS-7-22-200	61	TS-7K160-100	54	
TS-5-32-150	49	TS-7-23-075	61	TS-7K160-150	54	
TS-5-32-200	49	TS-7-23-100	61	TS-7K161-050	54	
TS-5-33-100	49	TS-7-23-150	61	TS-7K161-100	54	
TS-5-33-150	49	TS-7-23-200	61	TS-7K161-150	54	
TS-5-33-200	49	TS-7-24-075	61	TS-7K200-050	54	
TS-5-60	46	TS-7-24-100	61	TS-7K200-100	54	
TS-5-70	46	TS-7-24-150	61	TS-7K200-150	54	
TS-5-80	46	TS-7-24-200	61	TS-7K240-050	54	
TS-5-KB050	45	TS-7-25-075	61	TS-7K240-100	54	
TS-5-KB100	45	TS-7-25-100	61	TS-7K240-150	54	
TS-5-KB150	45	TS-7-25-150	61	TS5-A0500	43	
TS-5-S100	50	TS-7-25-200	61	TS5-A0700	53	
TS-5-S150	50	TS-7-26-075	61	TS5-G0500	43	
TS-5-S200	50	TS-7-26-100	61	TS5-G0700	53	
TS-5K090-050	44	TS-7-26-150	61	TS5-GA500-1	65	
TS-5K090-100	44	TS-7-26-200	61	TS5-GA500-2	65	
TS-5K090-150	44	TS-7-27-075	61	TS5-GA500-3	65	
TS-5K091-050	44	TS-7-27-100	61	TS5-GA500-4	65	
TS-5K091-100	44	TS-7-27-150	61	TS5-GA700-1	65	
TS-5K091-150	44	TS-7-27-200	61	TS5-GA700-2	65	
TS-5K120-050	44	TS-7-29-075	61	TS5-GA700-3	65	
TS-5K120-100	44	TS-7-29-100	61	TS5-GA700-4	65	
TS-5K120-150	44	TS-7-29-150	61	TS5-TSM-01	66	
TS-5K121-050	44	TS-7-29-200	61	TS5-TSM-02	66	
TS-5K121-100	44	TS-7-30-075	61	TS5-TSM-03	66	
TS-5K121-150	44	TS-7-30-100	61	TS5-TSM-04	66	
TS-5K150-050	44	TS-7-30-150	61	TS5A00500060	64	
TS-5K150-100	44	TS-7-30-200	61	TS5A00500061	64	
TS-5K150-150	44	TS-7-31-075	61	TS5A00500070	64	
TS-5K180-050	44	TS-7-31-100	61	TS5A00500071	64	
TS-5K180-100	44	TS-7-31-150	61	TS5A00500080	64	
TS-5K180-150	44	TS-7-31-200	61	TS5A00500090	64	
TS-7-01	59	TS-7-32-075	61	TS5A00700060	64	
TS-7-01-D050	58	TS-7-32-100	61	TS5A00700061	64	
TS-7-02	59	TS-7-32-150	61	TS5A00700070	64	
TS-7-03	59	TS-7-32-200	61	TS5A00700071	64	
TS-7-04	59	TS-7-35-075	61	TS5A00700080	64	
TS-7-05	59	TS-7-35-100	61	TS5A00700090	64	
TS-7-06	59	TS-7-35-150	61	TS5G00500060	64	
TS-7-10-050	59	TS-7-35-200	61	TS5G00500061	64	
TS-7-10-100	59	TS-7-36-075	61	TS5G00500070	64	
TS-7-10-D050	58	TS-7-36-100	61	TS5G00500071	64	
TS-7-10-D100	58	TS-7-36-150	61	TS5G00500080	64	
TS-7-11-050	59	TS-7-36-200	61	TS5G00500090	64	
TS-7-11-100	59	TS-7-60	58	TS5G00700060	64	
TS-7-12-050	59	TS-7-70	58	TS5G00700061	64	
TS-7-12-100	59	TS-7-80	58	TS5G00700070	64	
TS-7-13-050	59	TS-7-KB050	55	TS5G00700071	64	
TS-7-13-100	59	TS-7-KB100	55	TS5G00700080	64	
TS-7-14-050	59	TS-7-KB150	55	TS5G00700090	64	
TS-7-14-100	59	TS-7-M100	50	TSE-00-5-050	43	
TS-7-15-050	59	TS-7-M100	62	TSE-00-5-050	45	
TS-7-15-100	59	TS-7-M150	50	TSE-00-5-100	43	
TS-7-16-050	59	TS-7-M150	62	TSE-00-5-150	43	
TS-7-16-100	59	TS-7-M200	50	TSE-00-5-200	43	
TS-7-20-075	61	TS-7-M200	62	TSE-00-7-050	53	
TS-7-20-100	61	TS-7-S100	62	TSE-00-7-050	55	
TS-7-20-150	61	TS-7-S150	62	TSE-00-7-050	56	
TS-7-20-200	61	TS-7-S200	62	TSE-00-7-100	53	
TS-7-21-075	61	TS-7K120-050	54	TSE-00-7-100	56	
TS-7-21-100	61	TS-7K120-100	54	TSE-00-7-150	53	
TS-7-21-150	61	TS-7K120-150	54	TSE-00-7-150	56	
TS-7-21-200	61	TS-7K121-050	54	TSE-00-7-200	53	
TS-7-22-075	61	TS-7K121-100	54	Z14	14	

Offers apply to commerce, craft and industry. Subject to technical modifications and price changes due to increased price of materials. Prices shown are exclusive of statutory value added tax. Subject to printing errors and mistakes.

WORKPLACE UP TO DATE

... more work space

