A photograph of an industrial staircase with blue metal railings and yellow and black non-slip steps. The staircase is set against a white corrugated metal wall. The image is used as a background for the entire page, with blue and grey wavy graphic elements overlaid.

## **NON-SLIP SURFACE ASSORTMENT**

**YOUR  
ASSEMBLY  
WORKPLACE  
PARTNER**

## GRP - A UNIVERSAL GAMECHANGER

Welcome to the world of GRP solutions, where safety and sustainability intersect to redefine industry standards. In this exploration, we delve into the transformative potential of Glass Reinforced Polymer (GRP) innovations.

From fiberglass sheets providing robust corrosion resistance to decking strips transforming hazardous surfaces into safe environments, GRP offers a comprehensive suite of solutions. Stair nosings and tread protections ensure secure passage in any setting, while ladder rung covers guarantee stability even in challenging conditions. With a recent investment in cutting-edge technology, our ability to deliver tailored GRP solutions has never been more efficient.

Join us in embracing the power of GRP as we set new benchmarks for safety and sustainability in industrial applications.



**TAKING OUT OF STOCK**



**CUT TO SIZE SERVICE**



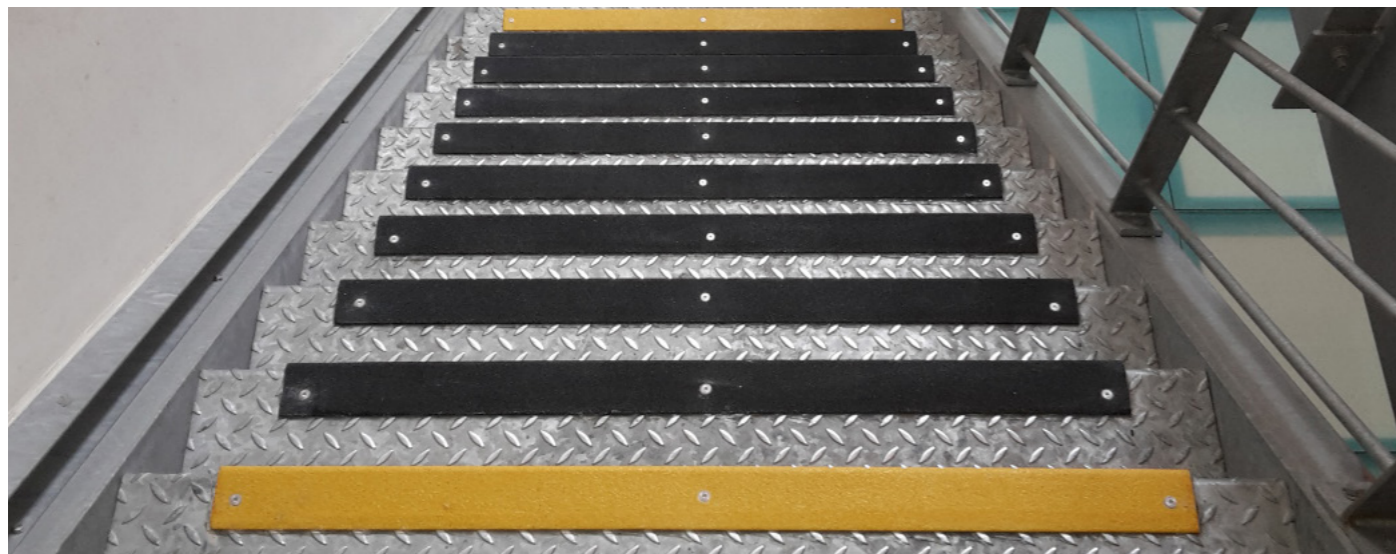
**FAST DELIVERY SERVICE**



**INSTALLATION SERVICE**

## STAIR NOSING

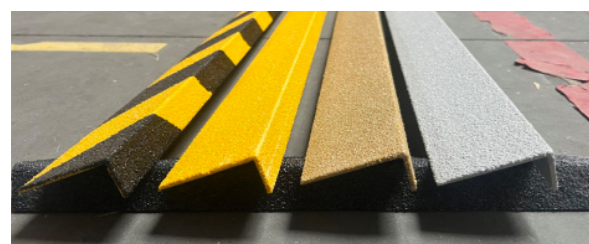
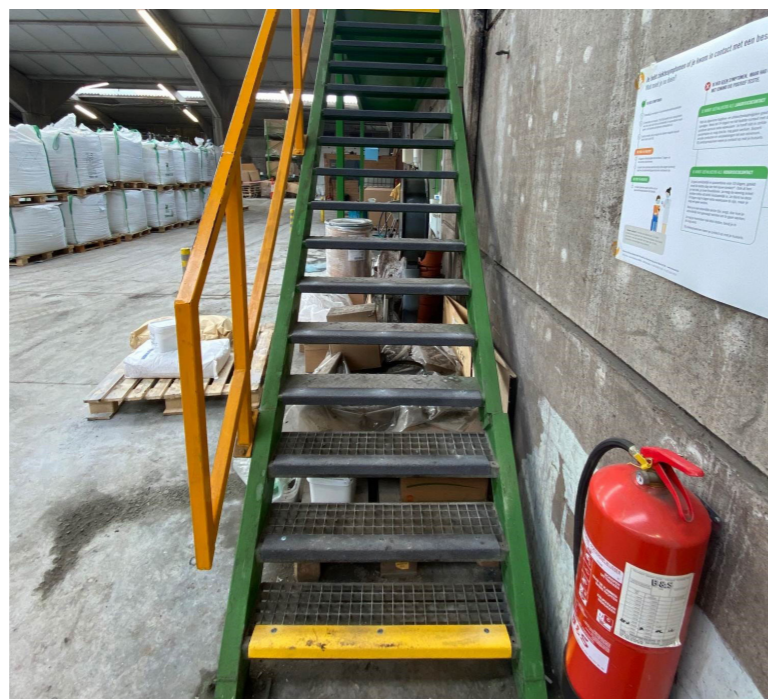
Enhance stair safety with anti-slip stair nosings. These durable solutions, easy to install, offer more slip resistance than alternatives such as rubber or aluminum. With options in yellow, black, and even luminescent stair nosings, there's ample choice to meet specific style and functionality requirements.



Stair nosing is available in 5 different colorways.



**IN STOCK**



Maximum sizes available:

- 3020x70x30mm (Grit No.7)
- 3020x55x55mm (Grit No.5)

✓ **Easy installation**

✓ **Cut to required sizes to order in our own workshop!**

## TREAD COVERS

Protect stair treads from slipperiness with fiberglass stair treads. Easy to install, both indoors and outdoors, they provide grip in wet, oily, and icy conditions. Available in various colors and requiring minimal maintenance, these stair treads are an affordable and effective solution to prevent accidents.



**IN STOCK**

Maximum sizes available:

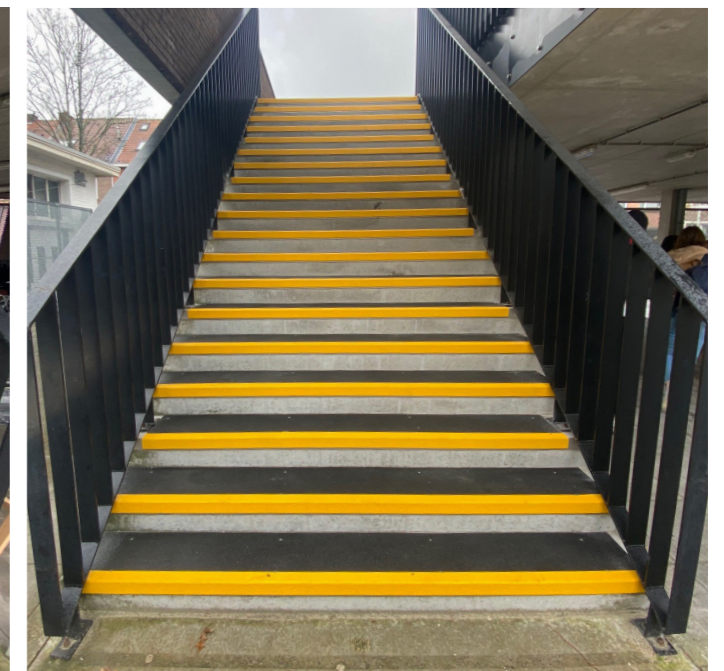
- 3020x280x30mm (Grit No.9)
- 3020x345x30mm (Grit No.9)

✓ **Cut to required sizes to order in our own workshop!**

**UNSAFE**



**SAFE**



**YOUR  
ASSEMBLY  
WORKPLACE  
PARTNER**

## SOLID GRITTED PLATE

A highly versatile laminated GRP plate that can be cut to almost any shape to fit in any application. Its gritted surface makes it perfect for use in any area that needs an anti-slip boost, without any structural requirements - whatever the industry. Also available in hazard coloring scheme.

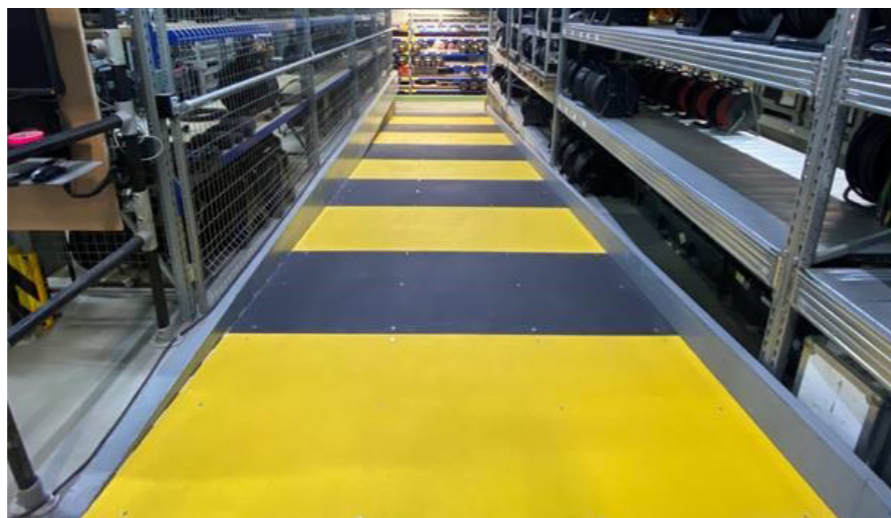
Maximum size available:

- 2000x1000mm (Grit No.9)

✓ Cut to required sizes to order in our own workshop!

✓ Easy installation

IN STOCK



## LADDER RUNG COVERS

The anti-slip ladder rung covers made of fiberglass are the ideal safety provision for ladders, due to their grip on old or slick ladder rungs. The durable fiberglass provides enhanced grip in wet, icy, or oily conditions. They are quick and easy to install and highly suitable for round and square ladder rungs. Ideal for fixed ladders, fire escape ladders, maintenance ladders and inspection ladders

Maximum sizes available:

- 1600mm, Dia.25mm (Grit No.7)
- 1600mm, Dia.30mm (Grit No.7)
- 1600mm, U-shape, 38x38x38mm (Grit No.7)

✓ Easy installation

✓ Cut to required sizes to order in our own workshop!



IN STOCK



IN STOCK



## DECKING STRIPS

Simplistic in their design, powerful on results, our Decking Strips make that hazardous decking area a safer place to be. Simply screw them to your existing timber decking to give it a new lease of life. Now supplied in a new finer grit finish that still gives the same anti slip confidence, but is kinder to bare skin!



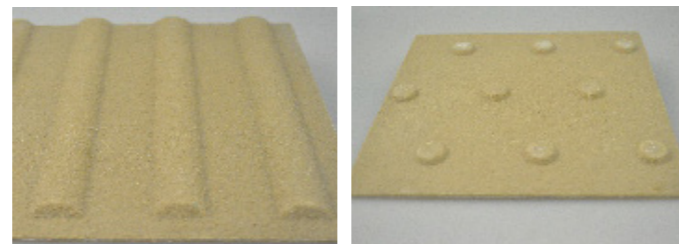
Maximum size available:

- 50mm wide, 3000mm long  
(Grit No.9)

- ✓ Easy installation
- ✓ Cut to required sizes to order in our own workshop!

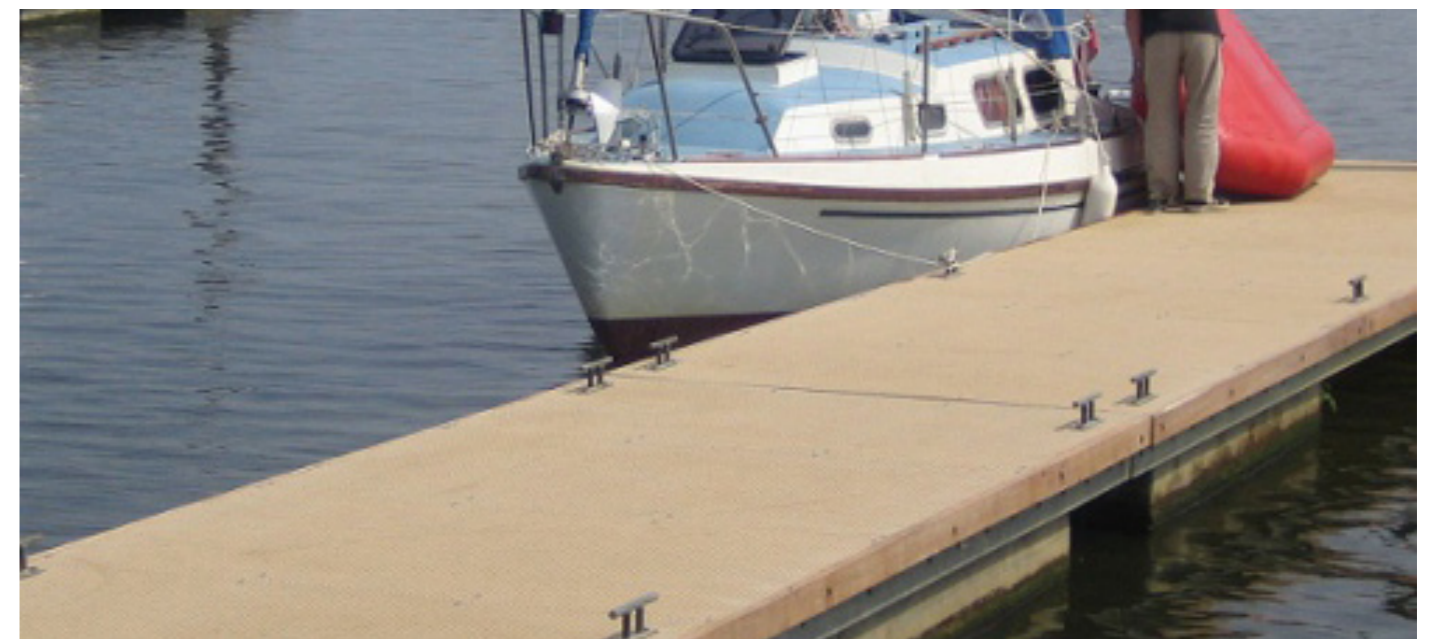
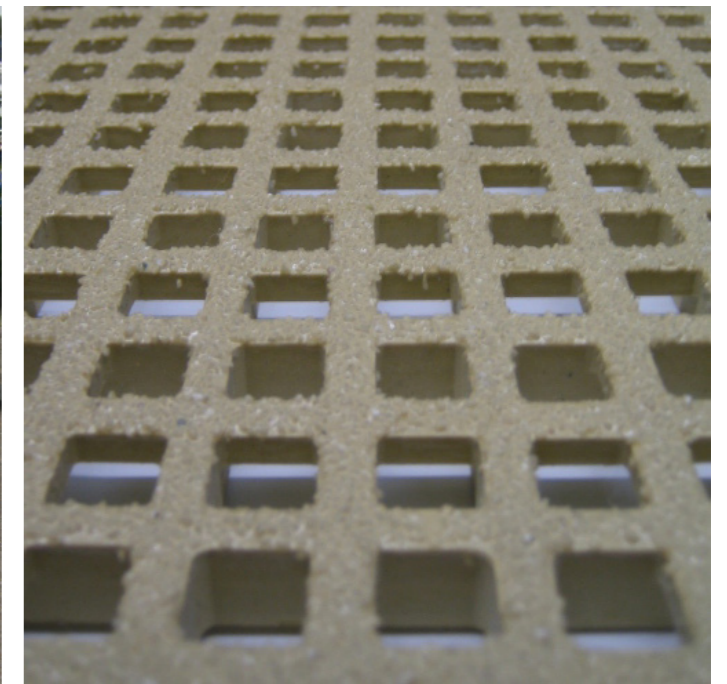
## TACTILE PLATE

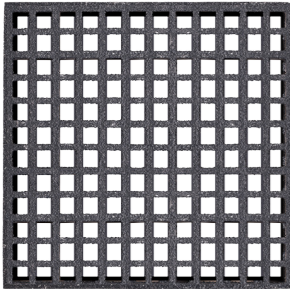
DDA compliant Tactile Plate is perfect for use in all areas where the visually impaired need help in negotiating hazards and changes in elevation.



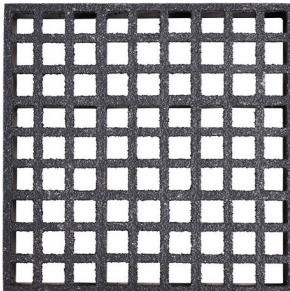
## MARINA DECKING

Our GRP Marina Decking anti-slip panels are fast becoming the preferred choice for pontoons and access ramps in the marina industry. With outstanding properties such as long life, corrosion resistance, UV stability, algae resistance and our EU Standard compliant anti-slip surface. Easy to install, lightweight yet strong and available in a range of thicknesses and colours to suit your requirements, cut in the right shape by our technicians. An demand, don't hesitate to ask our experts for more information





**Micromesh** panels have an 8 x 8mm opening and are available in grey and beige as standard in thicknesses of 22mm and 30mm. The smaller holes still give great drainage and the increase in material surface area makes this product stronger than its minimesh equivalent.



**Minimesh** (12 x 12mm opening) is the most popular of the two options, with additional thickness options of 14mm and 38mm and green added to the colour range. We also stock bespoke fixings for the minimesh panels in the form of M-Clips that make the installation quick and easy.



Our micro and mini mesh products are now also available in a fine grit finish. Same resistant properties, kinder to bare feet.



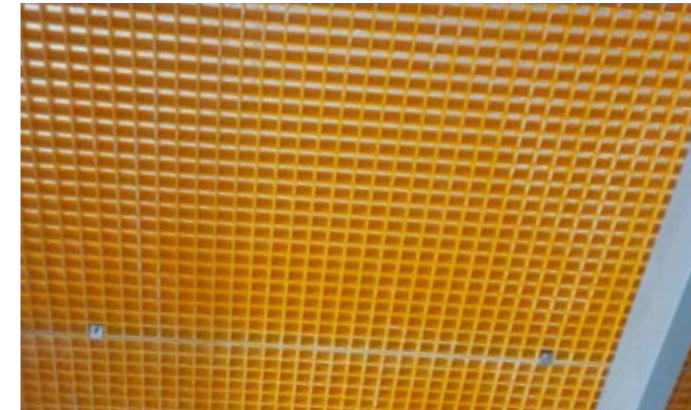
## NOT JUST FOR MARINA'S

The smaller aperture openings make these products ideal for access ramps and walkways of all kinds. A simple addition of a ramp edging piece gives a perfect finish and a smooth ride for wheelchairs. Striking to look at and highly practical meeting all DDA requirements.



## MESH INDUSTRIAL GRATING

Standard Mesh Grating can be used in a variety of applications, from general flooring to walkways, ramps and trench covers. It has an impressive strength to weight ratio and is specified by many major construction companies. An attractive and high performing alternative to traditional steel and aluminum grating.



**Ergonomic Handrail System:** Ideal for walkways and stairs. Manufactured in-house to your specifications and transported in sections.

**SafeClamp System:** This safety barrier handrail system is the most popular alternative to galvanised steel, due to its undeniable property advantages: non-corrosion, nonconductive; lightweight, high strength and, thermal stability.

 **BS7818 Approved**